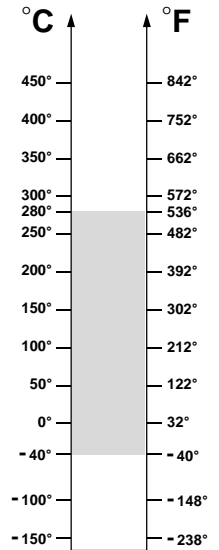
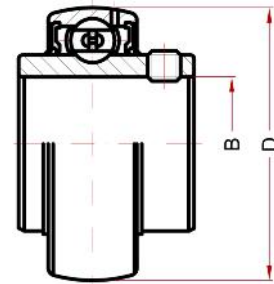


BHTS ZZ 280°



• AISI 52100
 • 4xC5
 • : ZZ
 • PTFE(-
 • 280° (-
 • 400°)
 • UCPA UCT



UC

	Ø (B)	Ø (D)	L	kN 280°C	kN 20°C	F	FL	P
UC 201 BHTS ZZ 280°	12	47	1440	4,72	6,60	F 204 SS	FL 204 SS	P 204 SS
UC 202 BHTS ZZ 280°	15	47	1440	4,72	6,60	F 204 SS	FL 204 SS	P 204 SS
UC 203 BHTS ZZ 280°	17	47	1440	4,72	6,60	F 204 SS	FL 204 SS	P 204 SS
UC 204 BHTS ZZ 280°	20	47	1200	4,72	6,60	F 204 SS	FL 204 SS	P 204 SS
UC 205 BHTS ZZ 280°	25	52	1120	5,58	7,80	F 205 SS	FL 205 SS	P 205 SS
UC 206 BHTS ZZ 280°	30	62	880	8,00	11,2	F 206 SS	FL 206 SS	P 206 SS
UC 207 BHTS ZZ 280°	35	72	760	10,7	15,1	F 207 SS	FL 207 SS	P 207 SS
UC 208 BHTS ZZ 280°	40	80	680	13,0	18,2	F 208 SS	FL 208 SS	P 208 SS
UC 209 BHTS ZZ 280°	45	85	640	14,7	20,6	F 209 SS	FL 209 SS	P 209 SS
UC 210 BHTS ZZ 280°	50	90	600	16,5	23,1	F 210 SS	FL 210 SS	P 210 SS
UC 211 BHTS ZZ 280°	55	100	536	20,7	29,0	F 211 SS	FL 211 SS	P 211 SS
UC 212 BHTS ZZ 280°	60	110	480	25,3	32,6	F 212 SS	FL 212 SS	P 212 SS
UC 213 BHTS ZZ 280°	65	120	424	28,4	39,8	F 213 SS	-	P 213 SS
UC 214 BHTS ZZ 280°	70	125	400	31,9	44,7	F 214 SS	-	P 214 SS
UC 215 BHTS ZZ 280°	75	130	384	35,1	49,2	F 215 SS	-	P 215 SS



UCF



UCFL



UCP

BECCO

12100 Cuneo - Italy
 Via Volta, 7
 phone: 0039 0171 66883
 fax: 0039 0171 648913

www.becoitalia.it