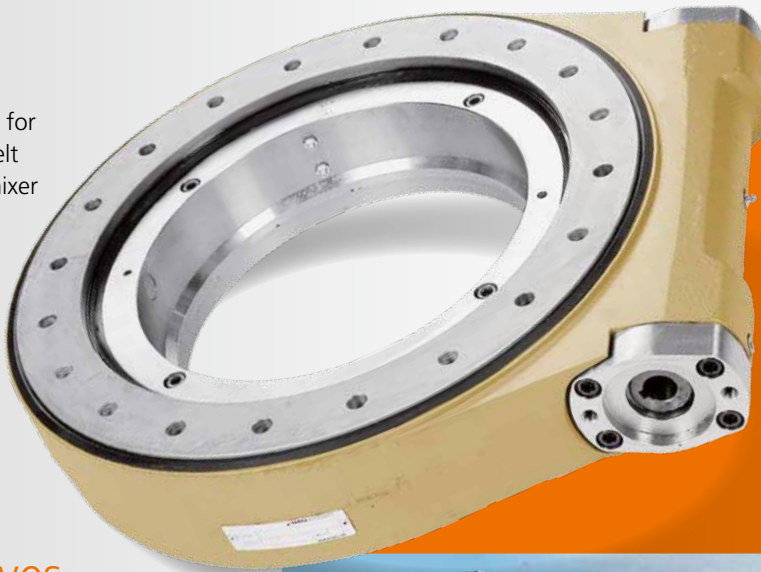




## Closed housing for **harsh** environments

**Slewing rings by IMO have been impressing the demanding construction machine sector for more than 25 years thanks to their closed housing with a long service life and reliability.**

Slew drive in range WD-L for the swiveling conveyor belt of a transport concrete mixer



Slew drives for construction machines

### IMO slew drives

- pinion and worm driven versions
- closed housing for harsh environmental conditions
- max. torques up to 450 kNm
- max. breakaway torque load up to 1200 kNm
- raceway diameters up to approx. 1000 mm

Rotary, swivel, and slewing tasks in one compact solution. Available in a broad palette of economical standard solutions or as a tailor-made customer solution.

Here a slew drive WD-H 0645 is being used for setting sheet piling



- excavator attachments
- picker arms
- demolition pincers
- small excavators
- transport concrete mixers
- conveyor belts
- concrete works
- ...

▲ This transport concrete mixer is fitted with a 16.5 m conveyor belt, swivel-mounted in two levels, each having a WD-LC 0419 slew drive

# Your Advantages

## for purchasing

- customer-specific solutions possible
- one unit instead of individual components
- short lead times
- low overall costs

## for service

- long service life
- extremely sturdy
- low maintenance costs
- simple to replace

## for engineering

- modular system
- compact and space-saving
- reduces construction costs
- tried and tested in dusty conditions
- saves on installation costs

## for end customers

- closed housing, high level of operational safety
- ready for installation with an elegant shape

Rotation and tipping device of a excavator bucket with a slew drive from the WD-LC 0419 range



This gripper has a slew drive from the SP range installed as a rotary linkage



Special design slew drive from the SP series for the foundation gripper on a heavy-duty construction machine

# IMO

made in Gremsdorf, Germany

More than 25 years on your side.

## Certifications

- ISO 9001
- ISO 14001
- OHSAS

## Headquarters

IMO GmbH & Co. KG  
Imostr. 1  
91350 Gremsdorf  
Germany

Tel. +49 9193 6395 - 4822  
Fax +49 9193 6395 - 4140  
construction@imo.de

## Your contact in the US

IMO USA Corp.  
Tel. +1 843 695-6200  
americas@imo.us