



Chaîne Verte® (Green Chain)

The first chain operating without lubrication that can function in water !

Advantages :

- **Avoiding pollution**
on conveyed products and the environment
- **Reducing maintenance costs**
eliminating lubricants and lubrication system
- **Increased reliability**
independent of maintenance efficiency
- **Resistance to corrosion**
in severe working conditions : water sprays, marine and industrial environments, organic solvents, hydraulic fluids, etc.
- **Maximum safety**
 - Potential fire hazards due to the accumulation of oil, grease and contaminated waste are eliminated.
 - Jerking and stopping due to joint seizures that can lead to falling of persons or transported objects are avoided.

The Chaîne Verte® (Green Chain)

is available in :

Standard transmission applications •

Standard conveyor applications •

Special conveyor applications
adapted to specific needs

Escalators •

Paper industry •

Food industry •

Slaughterhouses/Rendering plants •

Textile industry •

Automotive industry •

Home appliances industry •

Power stations •

Wood industry •

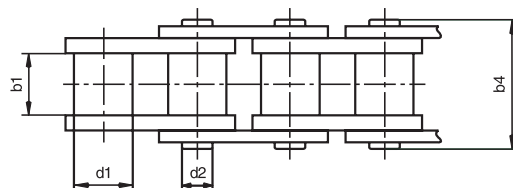
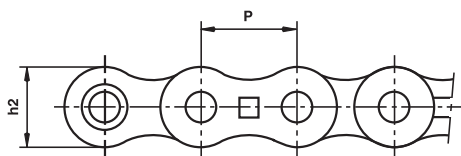
Palletizers •

Electronics industry •



STANDARD TRANSMISSION RANGE

These chains are available in simple, duplex and triplex versions



SEDIS Chain Reference	Pitch	Inner Width	Roller Ø	Plate Height	Pin Ø	Pin Length	Connecting link pin protruding length	Transversal Pitch	Min. tensile strength (KN)
	P	b1 mini	d1 maxi	h2	d2 maxi	b4	b7	Pt	
7NV	12,70	7,75	8,51	11,80	4,45	16,60	1,5	-	16,60
207NV	12,70	7,75	8,51	11,80	4,45	30,60	1,5	13,92	33,20
307NV	12,70	7,75	8,51	11,80	4,45	44,60	1,5	13,92	49,80
11NV	15,875	9,65	10,16	13,70	5,08	19,00	1,5	-	18,60
211NV	15,875	9,65	10,16	13,70	5,08	35,75	1,5	16,59	37,20
311NV	15,875	9,65	10,16	13,70	5,08	52,30	1,5	16,59	55,80
13NV	19,05	11,65	12,07	16,2	5,725	22,3	1,5	-	30,50
213NV	19,05	11,65	12,07	16,2	5,725	41,8	1,5	19,46	61,00
313 NV	19,05	11,65	12,07	16,2	5,725	61,4	1,5	19,46	91,50
15TV	25,4	17,02	15,88	20,8	7,94	35,1	3	-	66,00
215TV	25,4	17,02	15,88	20,8	7,94	68	3	31,88	132,00
315TV	25,4	17,02	15,88	20,8	7,94	99,9	3	31,88	198,00
17TV	31,75	19,56	19,05	25,4	9,53	40,5	8,5	-	99,00
217TV	31,75	19,56	19,05	25,4	9,53	77	8,5	36,45	198,00
317TV	31,75	19,56	19,05	25,4	9,53	113,5	8,5	36,45	297,00
18TV	38,1	25,4	25,4	33,5	12,6	52,5	8,5	-	160,00
218TV	38,1	25,4	25,4	33,5	12,6	100,3	8,5	48,36	320,00
318TV	38,1	25,4	25,4	33,5	12,6	150,2	8,5	48,36	480,00
22TV	50,8	30,95	29,21	42,3	14,27	63,5	10,4	-	228,00
222TV	50,8	30,95	29,21	42,3	14,27	121,6	10,4	58,55	456,00
322TV	50,8	30,95	29,21	42,3	14,27	184,5	10,4	58,55	684,00
23TV	63,50	38,10	39,37	52,80	22,89	79,00	12,00	-	365,00
223TV	63,50	38,10	39,37	52,80	22,89	154,90	12,00	72,29	730,00
323TV	63,50	38,10	39,37	52,80	22,89	227,20	12,00	72,29	1095,00

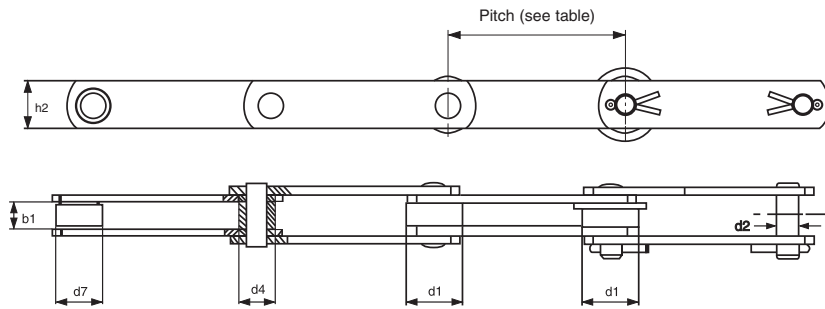
Dimensions in mm.



- Transmission "Chaînes Vertes®" ('Green chains') can be replaced by, but not joined to ISO 606 chains.
- Extractable pins.
- Derived from BS standards.
To be used with BS type sprockets;

Chaîne Verte
18 TV and 218 TV type for drop sections in automotive industry

STANDARD CONVEYOR RANGE



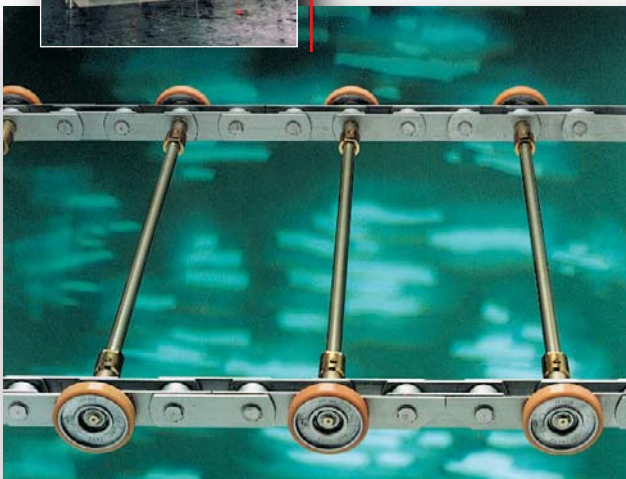
SEDIS Chain Reference	Pitch	b1	h2	d2	d4	d7	d1	Min. tensile strength in KN
M 80 V	80 to 315	27,1	36	10,2	18	25	50	80
M 112 V	80 to 400	31	41	13	21	30	60	112
M 160 V	100 to 500	36	51	16	25	36	70	160
M 224 V	125 to 630	42	61	20	30	42	85	224

Dimensions in mm.

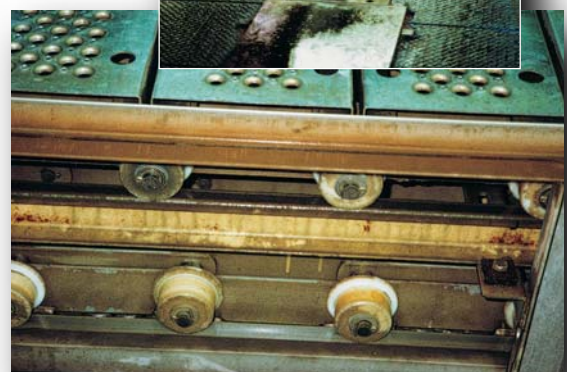
ADAPTED CONVEYOR CHAINS FOR SPECIAL APPLICATIONS



Escalator



Automotive industry :
leak-test chain conveyor

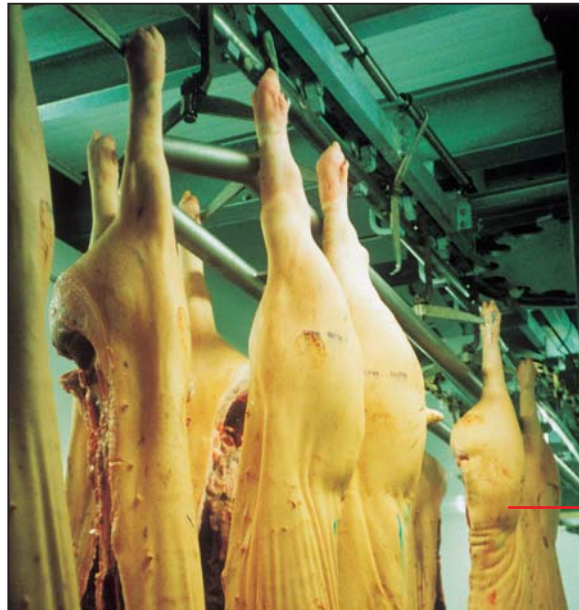




Chaîne Verte®

Applications :

- **Humid atmosphere** : The Chaîne Verte® (Green Chain') allows frequent washing by water under pressure,
- **The conveying of food products in clean areas,**
- **Chains operating in areas of restricted accessibility** where maintenance is dangerous if not impossible,
- **The conveying of products which are sensitive to lubricant** contamination where any contact will result in the products being unsuitable for use or sale,
- **Chain elevators** where the lubrication of a taut vertical chain is virtually impossible, resulting in chain seizure,
- **Chains operating in areas where the fire risk is increased** due to the accumulation of grease and debris.



Abattoirs/
Rendering plants
Pork carcasses conveyor

Temperature for use :

From -30°C to +80°C for standard Chaîne Verte®.
Consult us for any enquiry over these limits.

For use in a strongly alkaline or acid environment : consult us

sedis 

35, rue des Bas-Trévois - BP 104
F-10003 TROYES CEDEX
Tél. (33) 03 25 76 29 50 - Fax (33) 03 25 80 31 62

Internet : www.sedis.com
email : contact@sedis.com



Sedis reserves the right to amend any published details in this catalogue without liability.

Sedis Company Limited
PO Box 6529, Wellingborough, NN8 4YS
Tel. : 0870 160 7840 (Sales), 01933 222140 (Finance), Fax : 01604 764162
Web : www.sedis.com E-mail : sedisco@sedis.com
V.A.T. N°. GB 119 5134 79