

## Chains and Sprockets for the Steel and Aluminum Industries



Products for the entire processing  
in the steel and aluminum industries

03	.....	The KettenWulf Group
04	.....	We are Partners of the Steel Industry
06	.....	Chains for Pig-Iron Preparation
08	.....	Chains for Pig-Iron Moulding
10	.....	Chains for Onward Processing
12	.....	Transport of Finished Product
14	.....	Chains for Secondary Conveying
16	.....	KettenWulf Sprockets
18	.....	Products for Complete Drive Systems

## The KettenWulf Group



**The company headquarters in Kückelheim**

For over 85 years, KettenWulf, as an expanding global company, has stood for quality, reliability and flexibility. More than 1200 employees develop, produce and market customized solutions in the field of conveying and drive technology at ten locations across Europe, America and Asia. All around the globe, KettenWulf is your strategic partner when it comes to delivering optimal product quality.

Trust, loyalty and commitment – these values are what KettenWulf stands for. As a medium-sized, family-run company, cultivating a strong, personalized partnership with both our customers and suppliers is our highest priority.

Be it the Sauerland, Hangzhou, Atlanta or Pune – as an international company with worldwide operations, our employees are always at your service to meet your unique business needs and to provide you with industry leading technical support.



**Illustration top right:**  
KettenWulf in Ferlach,  
Austria

**Illustration center right:**  
KettenWulf  
in Atlanta, USA

**Illustration bottom right:**  
KettenWulf production  
and distribution site  
in Hangzhou, China

For more than 85 years the KettenWulf Group has been developing and manufacturing special conveyor chains for the steel, metallurgical and aluminum industries worldwide.

Our product range covers conveyor chains for the entire production process- from stockyard technology for coal and ores, to applications in powder metal facilities, furnaces, steelworks, casting machines and rolling mills up to the point of transport and looping chains for quality improvements in hot and cold rolled areas, KettenWulf has what you need.

High-performance products of premier quality, strict compliance to the most extreme specifications, innovation and a complete focus on our customers' demands form the basis for our leading reputation.

Our products excel through their use of leading edge technology, quality and reliability.

## We are partners of the steel industry

KettenWulf offers innovative chain technology for all conveyor applications in the steel- and metallurgical industry





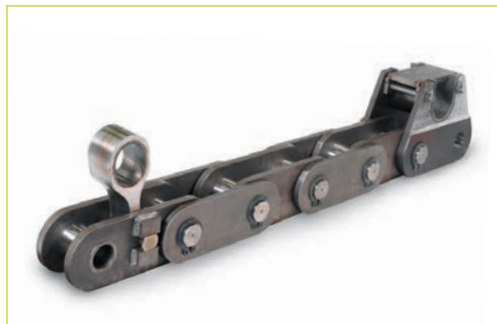
## KettenWulf products for all applications in the steel industry

The steel and metallurgical industries hold one of the harshest environments for chain technology. Direct exposure to abrasion or heat, heavy loads and high speeds are a challenge for a trouble-free operation of each chain system.

To meet these complex technical requirements found in all stages of steel manufacturing or processing, our R&D department always works in close collaboration with our customers.

As a result, we have developed state-of-the-art product technologies to optimize your production flow: be it to reduce wear on reclaimer chains in ore and coal mixing beds due to abrasion, to enhance temperature resistance in hot material transport or to obtain highest precision for roller chains used in looping tower applications - KettenWulf offers the right product solution.

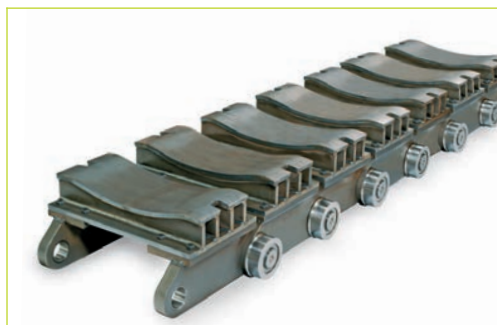
**Pan conveyor chain  
for sinter transport**



**Cold strand chain  
as start-up chain for  
continuous casting**



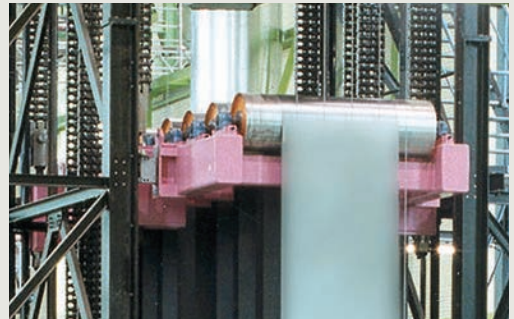
**Coil transport chain**



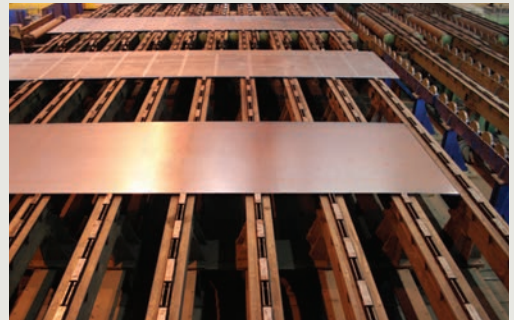
**Pan conveyor chain  
for scrap transport**



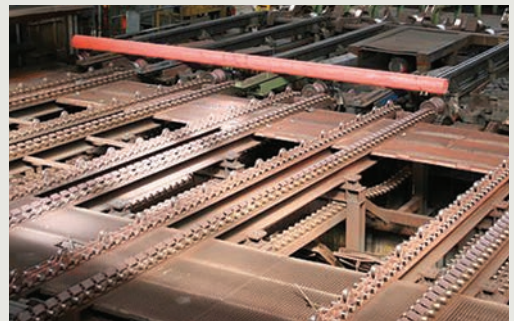
**Special duplex chain  
for looping tower**



**Deep link chain for  
steel sheet continuous  
conveyor**



**Special tappet chain  
for cooling bed  
pipe transport**







**KettenWulf chain technology for coil conveyors with center distances of more than 100 meters and total loads of more than 700 metric tons.**



Low-maintenance reclaimer chains for the handling of coal, iron ore and other additives as well as pan conveyor chains for charge preparation are only two of the many product solutions in which we have proven our superior technical capabilities.

The use of special materials in combination with highest manufacturing precision and respective heat treatment of the individual chain components increase the resistance of our chains to high temperatures and wear considerably.

## Chains for pig-iron preparation

Iron ore loading and preparation facility

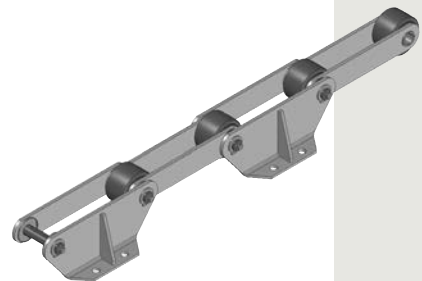
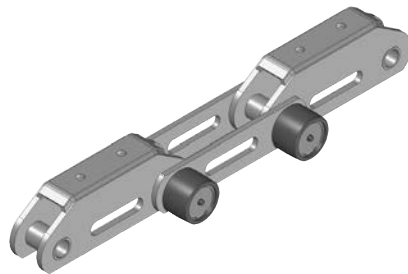




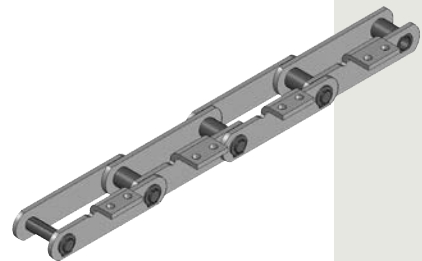
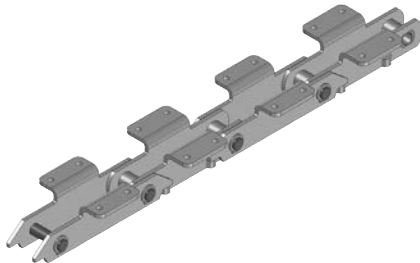
## From stockyard technology to charge preparation

Chain designs made by KettenWulf include lifetime lubricated support rollers and innovative sealing systems for chain joints to allow for an extended service life of each conveyor system. Attachments can be designed according to your specific requirements.

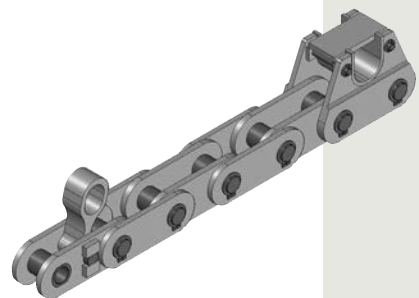
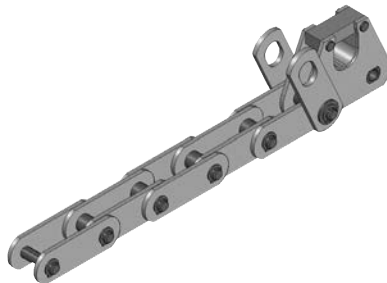
**Scraper chains for reclaiming systems**



**Short pan conveyor chains for coal and iron ore conveying**



**Pan conveyor chains for sinter transport**



In ingot casting and continuous casting, chains need to withstand temperatures of up to 1000 degrees Celsius and weights of up to 30 metric tons. This requires comprehensive know-how, which KettenWulf has not only gained through extensive and close collaboration with world-leading OEMs, but also through the many field operations worldwide that run on KettenWulf chain technology.

## Chains for pig-iron moulding

Round strand continuous casting



## From continuous casting to slab conveying

Successful chain technology in pig-iron moulding is based on complex geometries, highly wear resistant chain joints and temperature resistant materials.

**Cold strand chain  
as start-up chain**



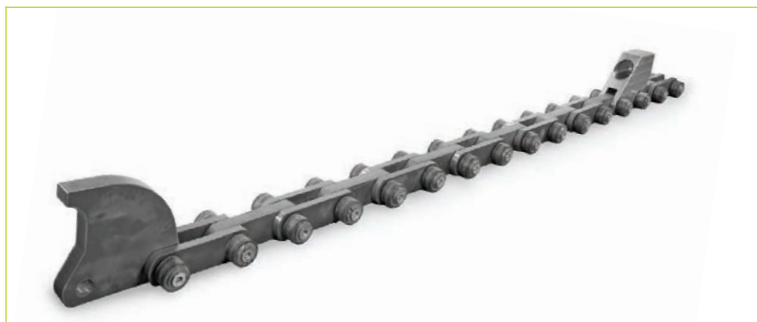
**Special roller chain for  
cold strand conveying**



**Slab conveyor chain**



**Special block link chain  
for dummy bar chain  
conveying**



KettenWulf offers customized chain technology for all conveyor applications used in the onward processing of slabs and billets into sheets, strips, sections and pipes.

Extreme wear resistance, high weights per piece of up to 40 metric tons with temperatures up to 900 degrees Celsius and a maximum precision of lengths for matched chain strands are met by the KettenWulf chain technology.

## Chains for onward processing

Coil transport in  
a hot strip mill





## From rolling mill technology to strip processing

KettenWulf chains are designed to exceed industry standards as to wear resistance and fatigue strength required for the transport of coils in the hot or cold rolling area, the conveying of sheets, sections and pipes or looping tower applications.

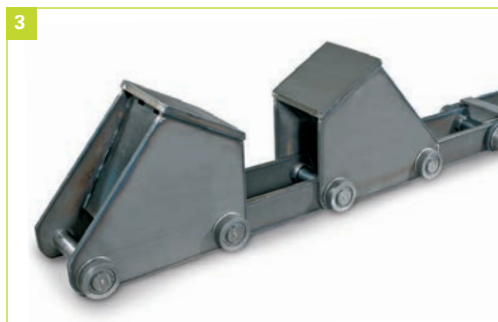
**Figure 1:**  
Deep link chain for  
steel sheet conveyor



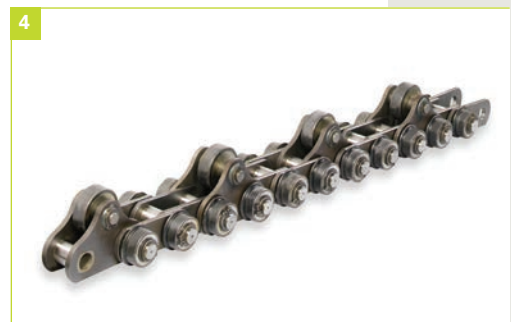
**Figure 2:**  
Pipe carrier chain in  
the cooling bed



**Figure 3:**  
Hump conveyor chain  
for hot coil transport



**Figure 4:**  
Chain with tappet  
for pipe transport



**Figure 5:**  
Special roller chain  
for strip looper



**Figure 6:**  
Duplex-roller chain  
with anti-twisting de-  
vice for looping tower



KettenWulf chains are used to transport finished products such as sheets, pipes and billets as well as wire and steel coils.

High speeds and temperatures, extreme ambient conditions and high product weights determine the objective of the chain technology.

## Transport of finished products

Transport of steel sheets to the cold straightening equipment



## Transport solutions for different products

Thanks to our manufacturing capabilities, KettenWulf is able to furnish individual solutions for the transport of finished products.

Besides customized chain attachments, we also offer low-maintenance rollers contributing to an optimal service life and operational security of our chains.

**Figure 1:**  
Carrier chain for  
sheet transport

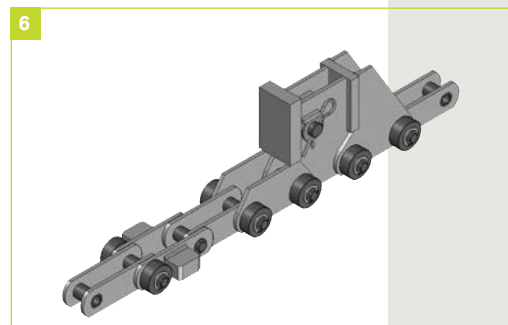
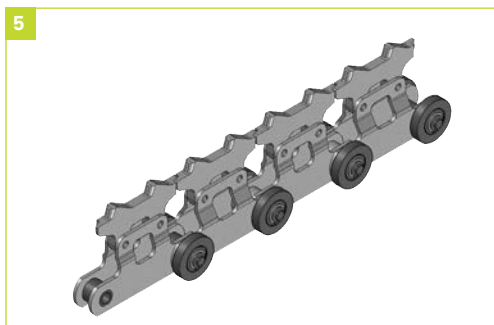
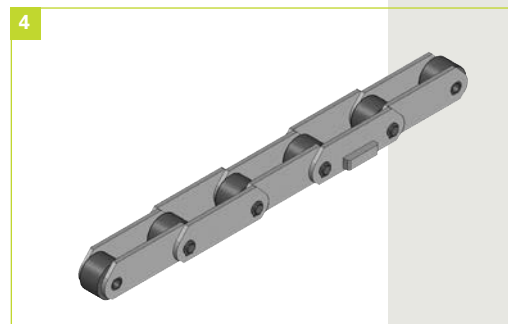
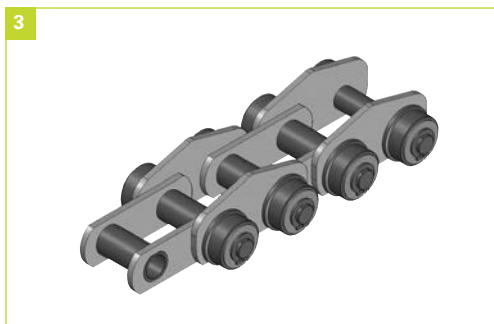
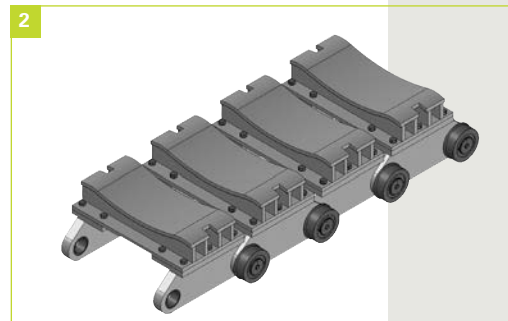
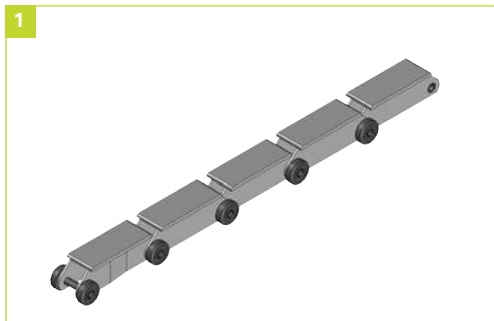
**Figure 2:**  
Tray chain for  
coil transport

**Figure 3:**  
Hump link plate chain  
for pipe transport

**Figure 4:**  
Deep link chain for  
beam transport

**Figure 5:**  
Conveyor chain for  
wire transport

**Figure 6:**  
Carrier chain for  
billet transport



Secondary conveying implies the transportation of either waste products such as metal scrap and slag or products which still need to be further processed, e.g. to add a certain coating. For all these purposes, KettenWulf has developed different chain types with specifically adapted product features.

## Chains for secondary conveying

Apron conveyor for steel scrap transport



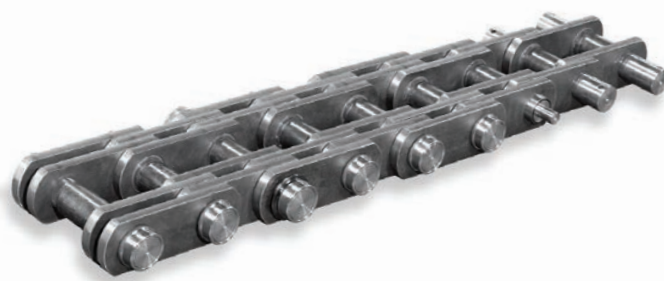


## From scrap transport to forging manipulator

**Apron conveyor chain  
for scrap transport**



**Draw Bench Chain**



**Plastic plated pan  
conveyor chain for  
careful transport of  
sheets and coils**



**Corrosion resistant  
pan conveyor chain for  
cooling conveyor in the  
aluminum industry**



**Rack for forging  
manipulator**



Sprockets are a critical factor for the capacity and endurance of every chain system. To ensure the same high quality standard of all products, KettenWulf relies on the production of their own sprockets.

In addition to sprockets according to DIN/ISO/ANSI specifications, our product range also covers individual solutions with optimized tooth profiles and wheel sizes. Whether you need sprockets made of superior material, with special tempering or induction hardened teeth – KettenWulf has the solution.

## KettenWulf sprockets

KettenWulf manufactures all types of sprockets as per customer specifications



## Optimum tooth designs for all chain types

We provide matching sprockets for all types of chains. Besides sprockets with DIN standard tooth forms, we also produce sprockets with optimized tooth profiles on our CNC machines.

Our production capabilities further include all sprocket designs such as sprockets with one-sided hubs, split-type sprockets, sprockets with detach-

able tooth shells or segments, shear-pin sprockets as well as sprockets with patented noise dampening systems.

**Figure 1:**  
Fork link chain sprocket  
in split execution

**Figure 2:**  
Split sprocket

**Figure 3:**  
Segmental rim sprocket

**Figure 4:**  
Triplex-roller  
chain sprocket

**Figure 5:**  
Pinion sprocket

**Figure 6:**  
Sprocket with de-  
tachable 3-parted  
toothed rim

1



2



3



4



5



6



## Products for complete drive systems

As a leader in conveyor and drive technology, KettenWulf has established itself in the market as a supplier of special components. Apart from manufacturing drive and tail shafts, we design and produce complete drive shaft systems comprised of shaft, sprockets and bearings.

**Assembly and final quality control of a complete drive shaft system**



**Figure 1:**  
Complete drive shaft  
for the steel industry

**Figure 2:**  
Complete tail shaft





*For further information please visit our web site [www.kettenwulf.com](http://www.kettenwulf.com).*

**KettenWulf Betriebs GmbH**  
Zum Hohenstein 15  
D-59889 Eslohe-Kückelheim  
Germany  
T +49.(0) 2973.801-0  
F +49.(0) 2973.801-2296  
service@kettenwulf.com

**KettenWulf Betriebs GmbH**  
Export Branch Office  
Am Fallturm 5, Gebäude 2  
D-28359 Bremen  
Germany  
T +49.(0) 421.696 939 0  
F +49.(0) 421.696 939 49  
export@kettenwulf.com

**KettenWulf GmbH**  
Division Ferlacher Förderketten  
A-9163 Unterbergen 25  
Austria  
T +43.(0) 4227.25 27  
F +43.(0) 4227.35 94  
austria@kettenwulf.com

**KettenWulf NV**  
Division Dyna Chains  
Venecoweg 20A - De Prijkels E17  
B-9810 Nazareth  
Belgium  
T +32.(0) 9.243 73 73  
F +32.(0) 9.221 56 03  
belgium@kettenwulf.com

**KettenWulf France SAS**  
10 rue du Château  
59100 Roubaix  
France  
T +33.(0) 328. 33 28 19  
F +33.(0) 328. 33 28 16  
france@kettenwulf.com

**Hangzhou Wulf Chain Co. Ltd.**  
40 Tangning Road, Yunhe Town  
Yuhang District  
311102 Hangzhou  
P.R. China  
T +86.(0) 571.861 899 00  
F +86.(0) 571.861 899 50  
info@wulfchain.com.cn

**KettenWulf USA, L.P.**  
The Woodlands at Riverside  
8110 Troon Circle SW, Suite 170  
Austell, GA 30168-7852  
USA  
T +1.678.433 0210  
F +1.678.433 0215  
usa@kettenwulf.com

**KettenWulf**  
Representative Office Poland  
ul. Ogrodowa 34 B\4  
PL-65-001 Zielona Góra  
Poland  
T +48.(0) 68.325 43 37  
F +48.(0) 68.325 43 37  
poland@kettenwulf.com

**KettenWulf**  
Representative Office Japan  
Monoh 4-chome, 14-13  
Minoh-shi  
Osaka 562-0001  
Japan  
T +81.72.796 24 24  
F +81.72.722 20 99  
japan@kettenwulf.com

**KettenWulf**  
Indian Liaison Office  
„Shalan“, 377, Sector 24,  
Lokmanya Tilak Road  
Near Bank of Maharashtra,  
Pradhikaran, Nigdi  
Pune-411004  
India  
T/F +91 20 2765 2302  
M +91 98 9050 3164  
india@kettenwulf.com

