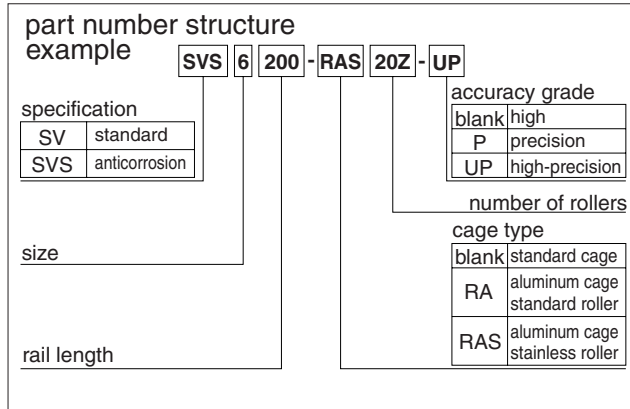
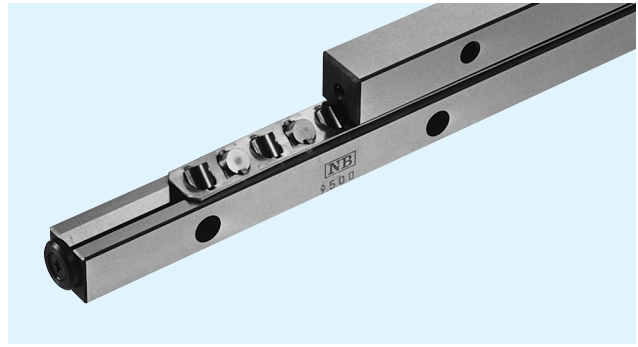




SV TYPE

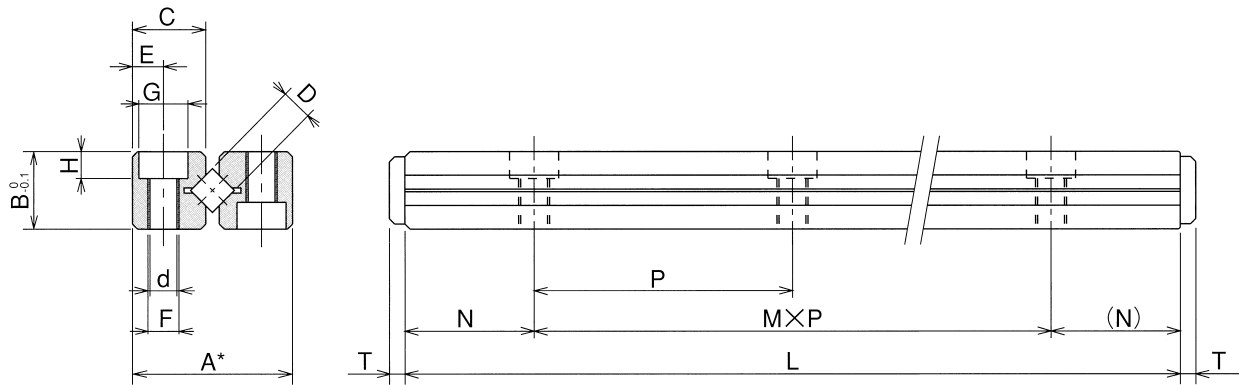
– SV1/SV2 –



part number		stroke mm	roller diameter D mm	number of rollers Z	L	A	B	C
standard	anticorrosion				mm	mm	mm	mm
SV1020-5Z	SVS1020-5Z	12	1.5	5	20	8.5	4	3.8
1030-7Z	1030-7Z	20		7	30			
1040-10Z	1040-10Z	27		10	40			
1050-13Z	1050-13Z	32		13	50			
1060-16Z	1060-16Z	37		16	60			
1070-19Z	1070-19Z	42		19	70			
1080-21Z	1080-21Z	50		21	80			
SV2030-5Z	SVS2030-5Z	18	2	5	30	12	6	5.5
2045-8Z	2045-8Z	24		8	45			
2060-11Z	2060-11Z	30		11	60			
2075-13Z	2075-13Z	44		13	75			
2090-16Z	2090-16Z	50		16	90			
2105-18Z	2105-18Z	64		18	105			
2120-21Z	2120-21Z	70		21	120			
2135-23Z	2135-23Z	84		23	135			
2150-26Z	2150-26Z	90		26	150			
2165-29Z	2165-29Z	95		29	165			
2180-32Z	2180-32Z	100		32	180			

Maximum Rail Length (SV type only)

part number	Max.length
SV1	200mm
SV2	450mm



* high grade : $A_{0.2}$ precision grade(P) : $A_{0.1}$ high-precision grade(UP) : $A_{0.1}$

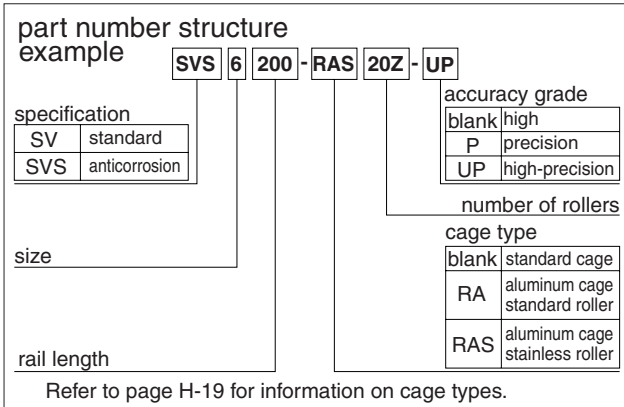
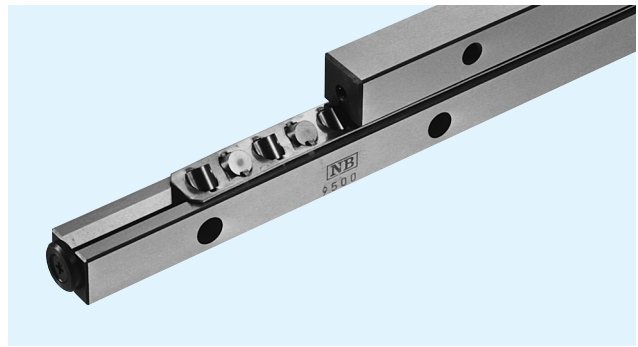
One set of components consists of 2 roller cages, 4 rails, and 8 end-pieces.

major dimensions								basic load rating		mass g	size
M×P mm	N mm	E mm	F	d mm	G mm	H mm	T mm	dynamic C N	static Co N		
1×10								340	312	11	1020
2×10								461	468	14	1030
3×10								676	780	18	1040
4×10	5	1.8	M2	1.65	3	1.4	0.8	776	936	22	1050
5×10								962	1,250	26	1060
6×10								1,050	1,400	30	1070
7×10								1,140	1,560	34	1080
1×15								594	588	28	2030
2×15								999	1,180	42	2045
3×15								1,180	1,470	55	2060
4×15								1,350	1,760	69	2075
5×15								1,680	2,350	83	2090
6×15	7.5	2.5	M3	2.55	4.4	2	2	1,840	2,650	96	2105
7×15								1,990	2,940	110	2120
8×15								2,130	3,230	123	2135
9×15								2,420	3,820	137	2150
10×15								2,560	4,120	151	2165
11×15								2,830	4,700	165	2180

1N≐0.102kgf

SV TYPE

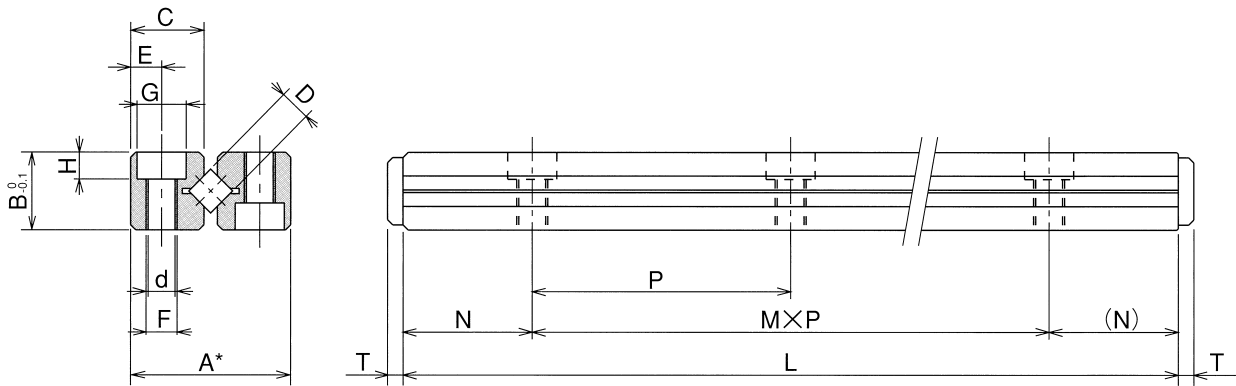
— SV3/SV4 —



part number		stroke mm	roller diameter D mm	number of rollers Z	L mm	A mm	B mm	C mm
standard	anticorrosion							
SV3050-7Z	SVS3050-7Z	28	3	7	50	18	8	8.3
3075-10Z	3075-10Z	48		10				
3100-14Z	3100-14Z	58		14				
3125-17Z	3125-17Z	78		17				
3150-21Z	3150-21Z	88		21				
3175-24Z	3175-24Z	105		24				
3200-28Z	3200-28Z	115		28				
3225-31Z	3225-31Z	135		31				
3250-35Z	3250-35Z	145		35				
3275-38Z	3275-38Z	165		38				
3300-42Z	3300-42Z	175		42				
3325-45Z	3325-45Z	195		45				
3350-49Z	3350-49Z	205		49				
SV4080-7Z	SVS4080-7Z	58	4	7	80	22	11	10.2
4120-11Z	4120-11Z	82		11				
4160-15Z	4160-15Z	105		15				
4200-19Z	4200-19Z	130		19				
4240-23Z	4240-23Z	150		23				
4280-27Z	4280-27Z	175		27				
4320-31Z	4320-31Z	200		31				
4360-35Z	4360-35Z	225		35				
4400-39Z	4400-39Z	250		39				
4440-43Z	4440-43Z	270		43				
4480-47Z	4480-47Z	295		47				

Maximum Rail Length (SV type only)

part number	Max.length
SV6	1000mm



* high grade : $A_{0.2}$ precision grade(P) : $A_{0.1}$ high-precision grade(UP) : $A_{0.1}$

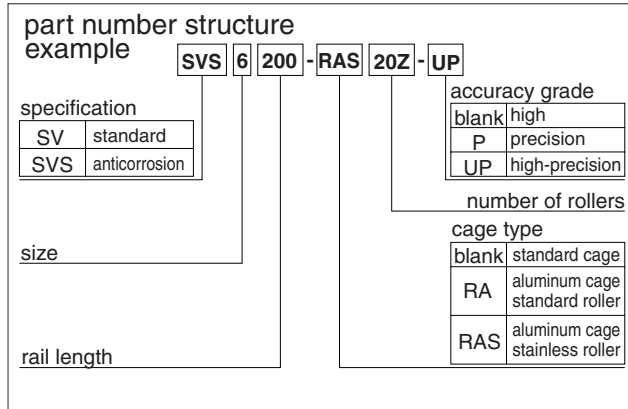
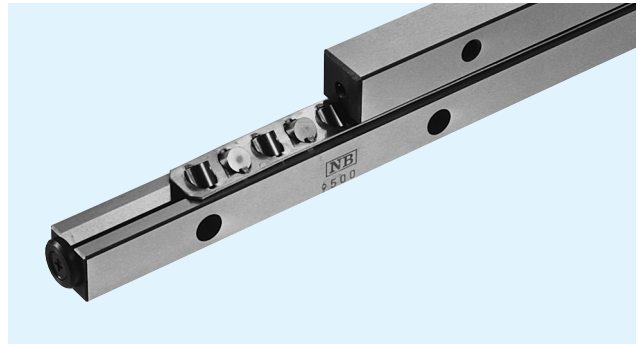
One set of components consists of 2 roller cages, 4 rails, and 8 end-pieces.

major dimensions								basic load rating		mass g	size
M×P mm	N mm	E mm	F	d mm	G mm	H mm	T mm	dynamic C N	static C ₀ N		
1×25								1,800	2,120	94	3050
2×25								2,640	3,530	135	3075
3×25								3,400	4,940	187	3100
4×25								3,760	5,650	234	3125
5×25								4,440	7,060	281	3150
6×25								5,100	8,470	327	3175
7×25	12.5	3.5	M4	3.3	6	3.1	2	5,720	9,880	374	3200
8×25								6,020	10,600	421	3225
9×25								6,620	12,000	468	3250
10×25								7,190	13,400	514	3275
11×25								7,750	14,800	561	3300
12×25								8,030	15,500	608	3325
13×25								8,570	16,900	655	3350
1×40								3,560	4,350	255	4080
2×40								5,220	7,250	385	4120
3×40								6,720	10,200	510	4160
4×40								8,120	13,100	635	4200
5×40								9,430	16,000	770	4240
6×40	20	4.5	M5	4.3	8	4.2	2	10,700	18,900	905	4280
7×40								11,900	21,800	1,020	4320
8×40								13,100	24,700	1,160	4360
9×40								14,200	27,600	1,280	4400
10×40								15,300	30,500	1,410	4440
11×40								16,400	33,400	1,540	4480

1N≅0.102kgf

SV TYPE

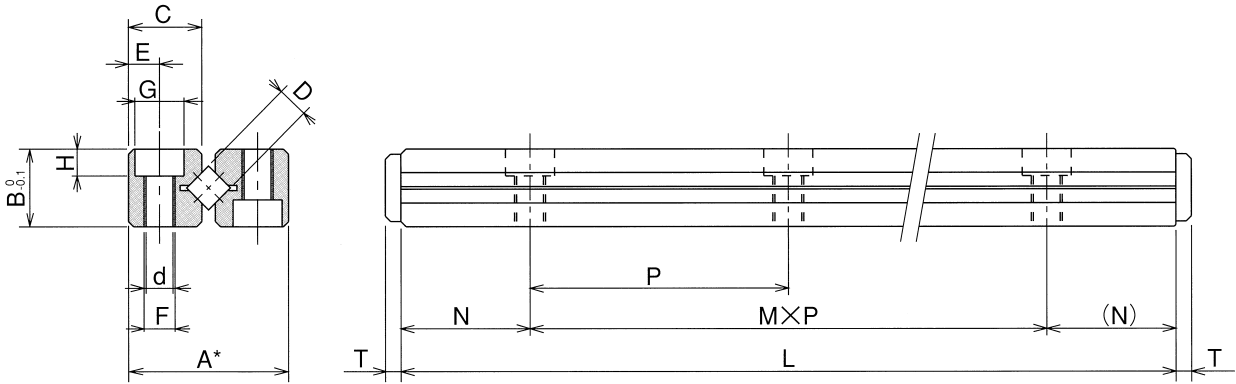
— SV6/SV9 —



part number		stroke mm	roller diameter D mm	number of rollers Z	L	A	B	C
standard	anticorrosion				mm	mm	mm	mm
SV6100-8Z	SVS6100-8Z	55	6	8	100	31	15	14.2
6150-12Z	6150-12Z	85		12	150			
6200-16Z	6200-16Z	120		16	200			
6250-20Z	6250-20Z	150		20	250			
6300-24Z	6300-24Z	185		24	300			
6350-28Z	6350-28Z	215		28	350			
6400-32Z	6400-32Z	245		32	400			
6450-36Z	6450-36Z	280		36	450			
6500-40Z	6500-40Z	310		40	500			
6600-49Z	6600-49Z	360		49	600			
SV9200-10Z	—	115		9	10			
9300-15Z	—	175	15		300			
9400-20Z	—	235	20		400			
9500-25Z	—	295	25		500			
9600-30Z	—	355	30		600			
9700-35Z	—	415	35		700			
9800-40Z	—	475	40		800			
9900-45Z	—	535	45		900			
91000-50Z	—	595	50		1,000			

Maximum Rail Length (SV type only)

part number	Max.length
SV3	700mm
SV4	700mm



* high grade : $A_{0.2}$ precision grade(P) : $A_{0.1}$ high-precision grade(UP) : $A_{0.1}$

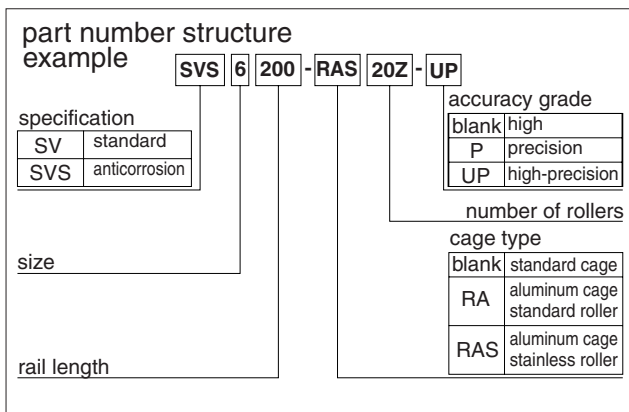
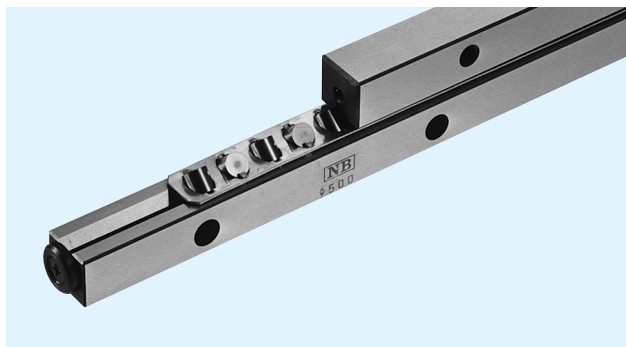
One set of components consists of 2 roller cages, 4 rails, and 8 end-pieces.

major dimensions								basic load rating		mass g	size
M×P mm	N mm	E mm	F	d mm	G mm	H mm	T mm	dynamic C N	static Co N		
1×50	25	6	M6	5.2	9.5	5.2	3	10,900	14,500	628	6100
2×50								14,700	21,700	942	6150
3×50								18,300	29,000	1,260	6200
4×50								21,600	36,200	1,570	6250
5×50								24,800	43,400	1,880	6300
6×50								27,800	50,700	2,200	6350
7×50								30,700	57,900	2,510	6400
8×50								33,600	65,200	2,830	6450
9×50								36,300	72,400	3,140	6500
11×50								41,600	86,900	3,770	6600
1×100								50	9	M8	6.8
2×100	32,500	50,800	4,030	9300							
3×100	42,500	72,600	5,380	9400							
4×100	48,700	87,100	6,700	9500							
5×100	57,600	109,000	8,050	9600							
6×100	63,300	123,000	9,230	9700							
7×100	71,500	145,000	10,500	9800							
8×100	76,800	160,000	11,900	9900							
9×100	84,500	182,000	13,000	91000							

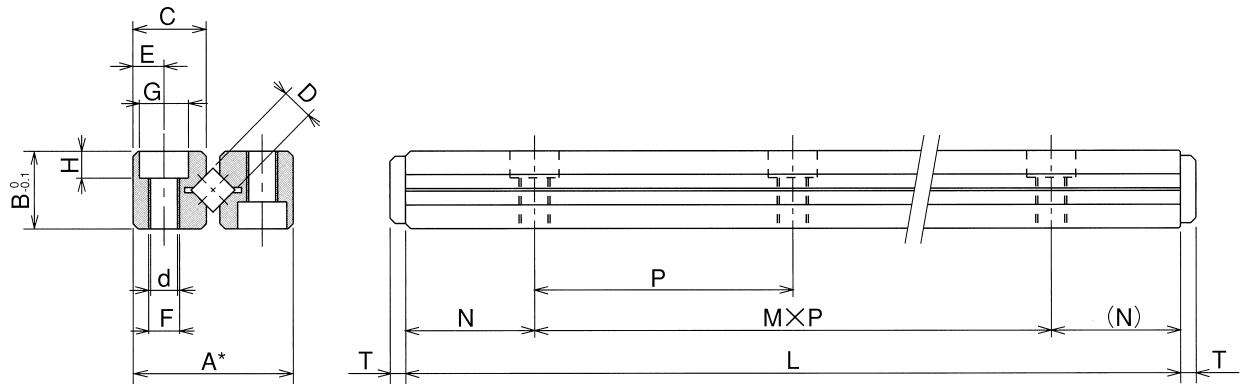
1N≅0.102kgf

SV TYPE

– SV12 –



part number		stroke mm	roller diameter D mm	number of rollers Z	L	A	B	C
standard	anticorrosion				mm	mm	mm	mm
SV12300-10Z	—	200	12	10	300	58	28	27
12400-14Z	—	240		14	400			
12500-17Z	—	320		17	500			
12600-21Z	—	360		21	600			
12700-24Z	—	440		24	700			
12800-28Z	—	480		28	800			
12900-31Z	—	560		31	900			
121000-34Z	—	640		34	1,000			
121100-38Z	—	680		38	1,100			
121200-42Z	—	720		42	1,200			



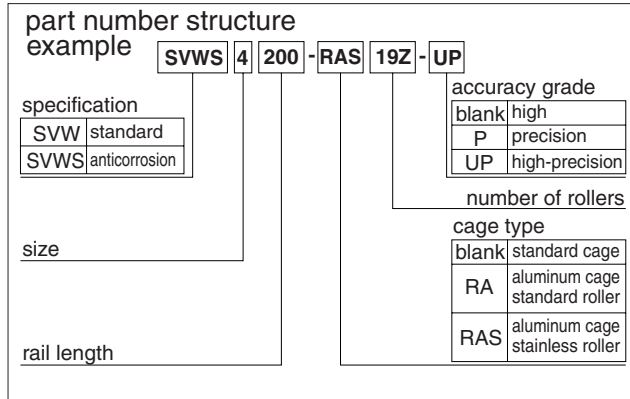
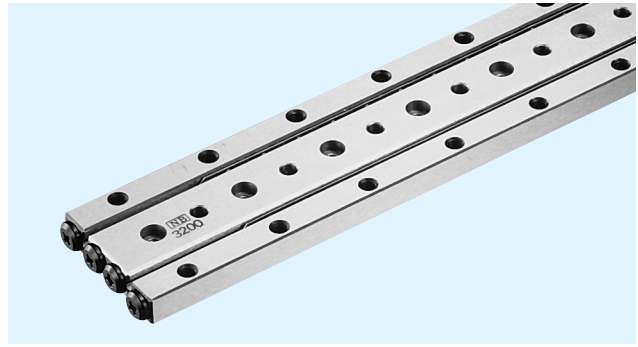
* high grade : $A_{0.2}$ precision grade(P) : $A_{0.1}$ high-precision grade(UP) : $A_{0.1}$

One set of components consists of 2 roller cages, 4 rails, and 8 end-pieces.

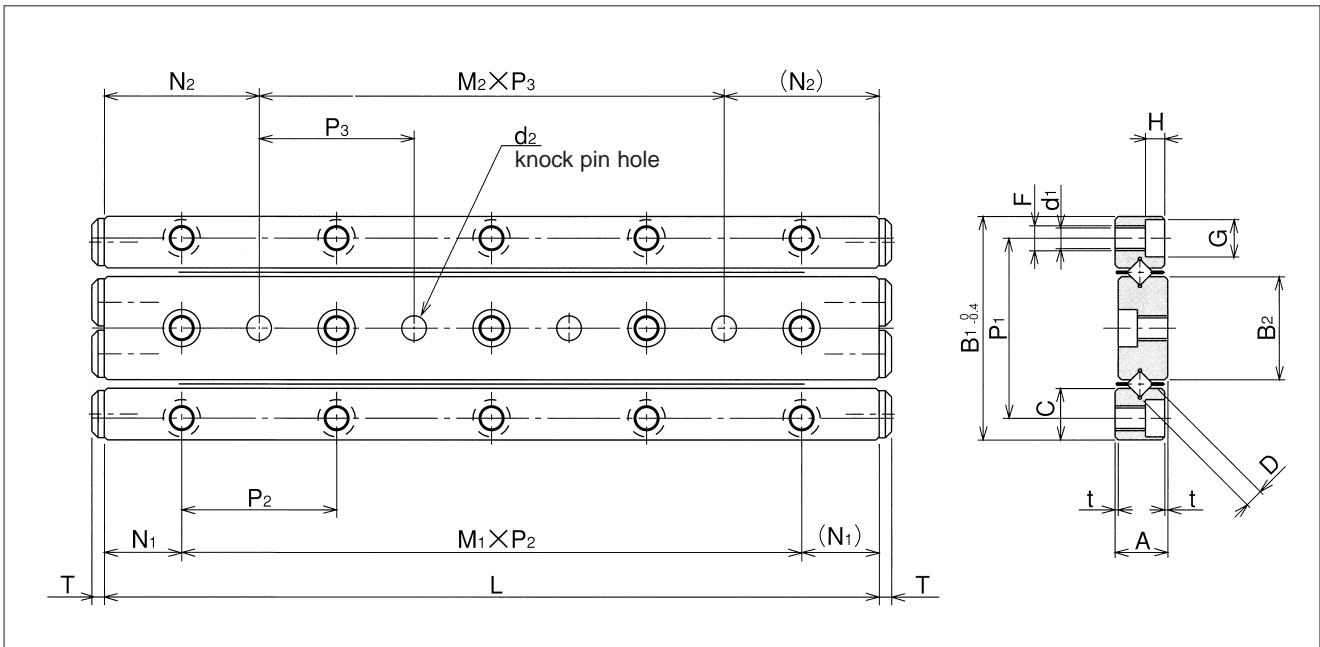
major dimensions								basic load rating		mass g	size
M×P mm	N mm	E mm	F	d mm	G mm	H mm	T mm	dynamic C N	static Co N		
2×100								42,700	73,500	6,880	12300
3×100								55,000	103,000	9,090	12400
4×100								60,800	118,000	11,400	12500
5×100								71,800	147,000	13,700	12600
6×100	50	12	M10	8.5	13.5	8.2	4	82,400	176,000	15,800	12700
7×100								92,400	206,000	18,200	12800
8×100								97,400	221,000	20,500	12900
9×100								107,000	250,000	22,800	121000
10×100								116,000	279,000	25,000	121100
11×100								125,000	309,000	27,300	121200

1N≅0.102kgf

SVW TYPE



part number		stroke mm	roller diameter D mm	number of rollers Z	L mm	A mm	t mm	B ₁ mm	B ₂ mm	C mm	P ₁ mm	M ₁ ×P ₂ mm
standard	anticorrosion											
SVW1020- 5Z	SVWS1020- 5Z	12		5	20							1×10
1030- 7Z	1030- 7Z	20		7	30							2×10
1040-10Z	1040-10Z	27		10	40							3×10
1050-13Z	1050-13Z	32	1.5	13	50	4.5	0.5	17	7.6	3.8	13.4	4×10
1060-16Z	1060-16Z	37		16	60							5×10
1070-19Z	1070-19Z	42		19	70							6×10
1080-21Z	1080-21Z	50		21	80							7×10
SVW2030- 5Z	SVWS2030- 5Z	18		5	30							1×15
2045- 8Z	2045- 8Z	24		8	45							2×15
2060-11Z	2060-11Z	30		11	60							3×15
2075-13Z	2075-13Z	44	2	13	75	6.5	0.5	24	11	5.5	19	4×15
2090-16Z	2090-16Z	50		16	90							5×15
2105-18Z	2105-18Z	64		18	105							6×15
2120-21Z	2120-21Z	70		21	120							7×15
SVW3050- 7Z	SVWS3050- 7Z	28		7	50							1×25
3075-10Z	3075-10Z	48		10	75							2×25
3100-14Z	3100-14Z	58		14	100							3×25
3125-17Z	3125-17Z	78	3	17	125	8.5	0.5	36	16.6	8.3	29	4×25
3150-21Z	3150-21Z	88		21	150							5×25
3175-24Z	3175-24Z	105		24	175							6×25
3200-28Z	3200-28Z	115		28	200							7×25
SVW4080- 7Z	SVWS4080- 7Z	58		7	80							1×40
4120-11Z	4120-11Z	82		11	120							2×40
4160-15Z	4160-15Z	105	4	15	160	11.5	0.5	44	20.4	10.2	35	3×40
4200-19Z	4200-19Z	130		19	200							4×40
4240-23Z	4240-23Z	150		23	240							5×40
4280-27Z	4280-27Z	175		27	280							6×40

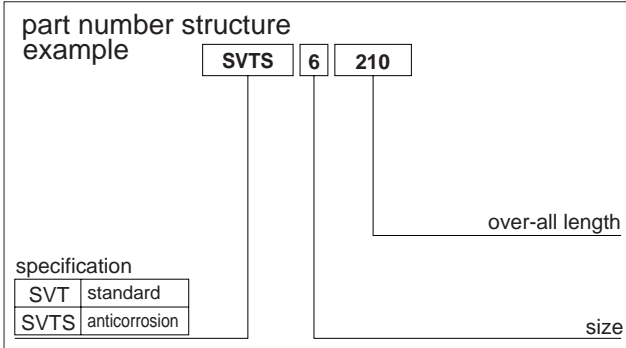


major dimensions									basic load rating		mass g	size
N_1 mm	F	d_1 mm	G	H	$M_2 \times P_3$ mm	N_2 mm	d_2 mm	T mm	dynamic C N	static C_o N		
5	M2	1.65	3	1.4	—	10	2	1	340	312	11	1020
					1×10				461	468	14	1030
					2×10				676	780	18	1040
					3×10				776	936	22	1050
					4×10				962	1,250	26	1060
					5×10				1,050	1,400	30	1070
6×10	1,140	1,560	34	1080								
7.5	M3	2.55	4.4	2	—	15	3	2	594	588	28	2030
					1×15				999	1,180	42	2045
					2×15				1,180	1,470	55	2060
					3×15				1,350	1,760	69	2075
					4×15				1,680	2,350	83	2090
					5×15				1,840	2,650	96	2105
6×15	1,990	2,940	110	2120								
12.5	M4	3.3	6	3.1	—	25	4	2	1,800	2,120	94	3050
					1×25				2,640	3,530	135	3075
					2×25				3,400	4,940	187	3100
					3×25				3,760	5,650	234	3125
					4×25				4,440	7,060	281	3150
					5×25				5,100	8,470	327	3175
6×25	5,720	9,880	374	3200								
20	M5	4.3	8	4.2	—	40	5	2	3,560	4,350	255	4080
					1×40				5,220	7,250	385	4120
					2×40				6,720	10,200	510	4160
					3×40				8,120	13,100	635	4200
					4×40				9,430	16,000	770	4240
5×40	10,700	18,900	905	4280								

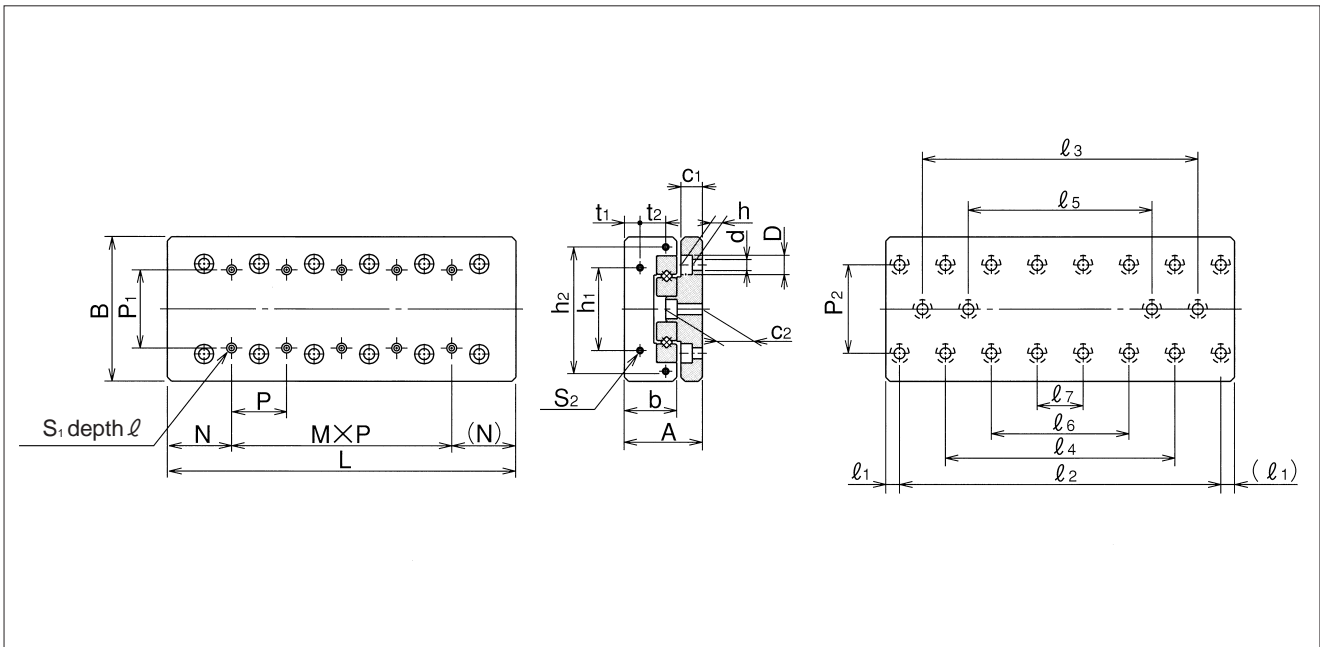
1N \approx 0.102kgf

SVT TYPE

– SVT1/SVT2 –

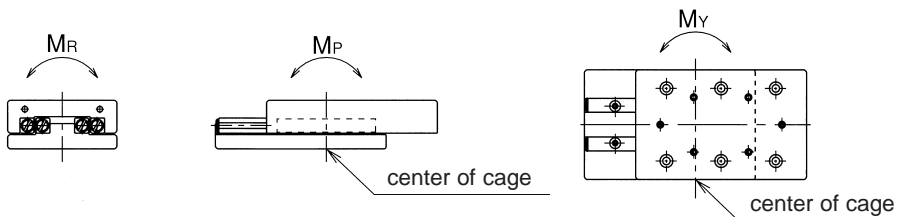


part number		stroke mm	major dimensions				table-top mounting-hole dimensions					table-end mounting-hole dimensions					
standard	anticorrosion		A mm	B mm	L mm	b mm	P ₁ mm	S ₁	ℓ mm	N mm	M×P mm	h ₁ mm	h ₂ mm	t ₁ mm	t ₂ mm	S ₂	P ₂ mm
SVT1025	SVTS1025	12			25					–							
1035	1035	18			35					1×10							
1045	1045	25			45					2×10							
1055	1055	32	17 ^{±0.1}	30 ^{-0.2/-0.4}	55	11	10	M2	4	12.5	3×10	12	–	2.5	–	M2	22
1065	1065	40			65						4×10						
1075	1075	45			75						5×10						
1085	1085	50			85						6×10						
SVT2035	SVTS2035	18			35					–							
2050	2050	30			50					1×15							
2065	2065	40			65					2×15							
2080	2080	50			80					3×15							
2095	2095	60			95					4×15							
2110	2110	70	21 ^{±0.1}	40 ^{-0.2/-0.4}	110	14	15	M3	6	17.5	5×15	16	–	3.4	–	M2	30
2125	2125	80			125						6×15						
2140	2140	90			140						7×15						
2155	2155	100			155						8×15						
2170	2170	110			170						9×15						
2185	2185	120			185						10×15						



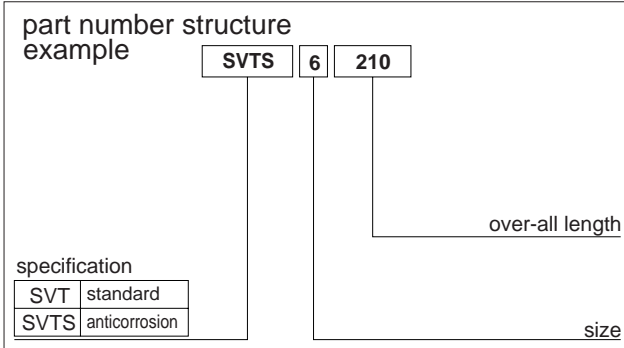
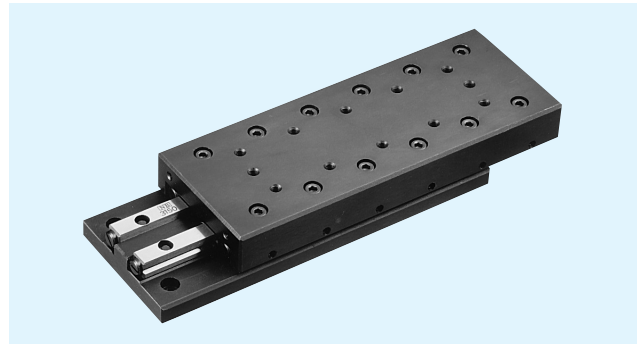
bed-surface mounting-hole dimensions										accuracy※		basic load rating		allowable static moment			mass		size	
$d \times D \times h$ mm	c_1 mm	c_2 mm	l_1 mm	l_2 mm	l_3 mm	l_4 mm	l_5 mm	l_6 mm	l_7 mm	T μm	S μm	C N	Co N	M_P N·m	M_Y N·m	M_R N·m	SVT g	SVTS g		
2.5×4.5×2.5	5.5	9	3.5	18	—	—	—	—	—	2	4	340	312	1.1	1.0	2.1	82	36	1025	
				28	—	—	—	—	—	2	4	572	624	2.0	2.3	4.2	120	50	1035	
				38	—	—	—	—	—	—	2	4	676	780	4.6	4.3	5.3	158	69	1045
				48	—	28	—	—	—	—	2	5	776	936	6.3	5.9	6.3	190	83	1055
				58	—	38	—	—	—	—	2	5	871	1,090	8.3	7.8	7.3	225	98	1065
				68	—	48	—	—	—	—	2	5	1,050	1,400	13	12.4	9.5	260	113	1075
				78	—	58	—	—	—	—	2	5	1,140	1,560	15.7	15.0	10.5	295	128	1085
3.5×6.5×3.5	6.5	10.9	5	25	—	—	—	—	—	2	4	594	588	3.5	2.9	5.3	195	90	2035	
				40	—	—	—	—	—	2	4	805	882	6.1	5.5	7.9	280	133	2050	
				55	—	—	—	—	—	—	2	5	999	1,180	9.7	8.8	10.6	370	175	2065
				70	—	40	—	—	—	—	2	5	1,350	1,760	14	15.3	15.9	450	220	2080
				85	—	55	—	—	—	—	2	5	1,520	2,060	19.1	20.6	18.5	540	250	2095
				100	—	70	—	—	—	—	3	6	1,680	2,350	31.7	30.0	21.2	630	285	2110
				115	—	85	—	—	—	—	3	6	1,840	2,650	39.1	37.2	23.8	720	330	2125
				130	—	100	—	70	—	—	3	6	2,130	3,230	47.3	49.6	29.1	800	360	2140
				145	—	115	—	85	—	—	3	6	2,280	3,530	56.3	58.8	31.8	880	400	2155
				160	—	130	—	100	—	—	3	7	2,420	3,820	76.7	74.1	34.4	970	440	2170
175	—	145	—	115	85	—	3	7	2,560	4,120	88.1	85.3	37.0	1,060	480	2185				

1N≒0.102kgf 1N·m≒0.102kgf·m

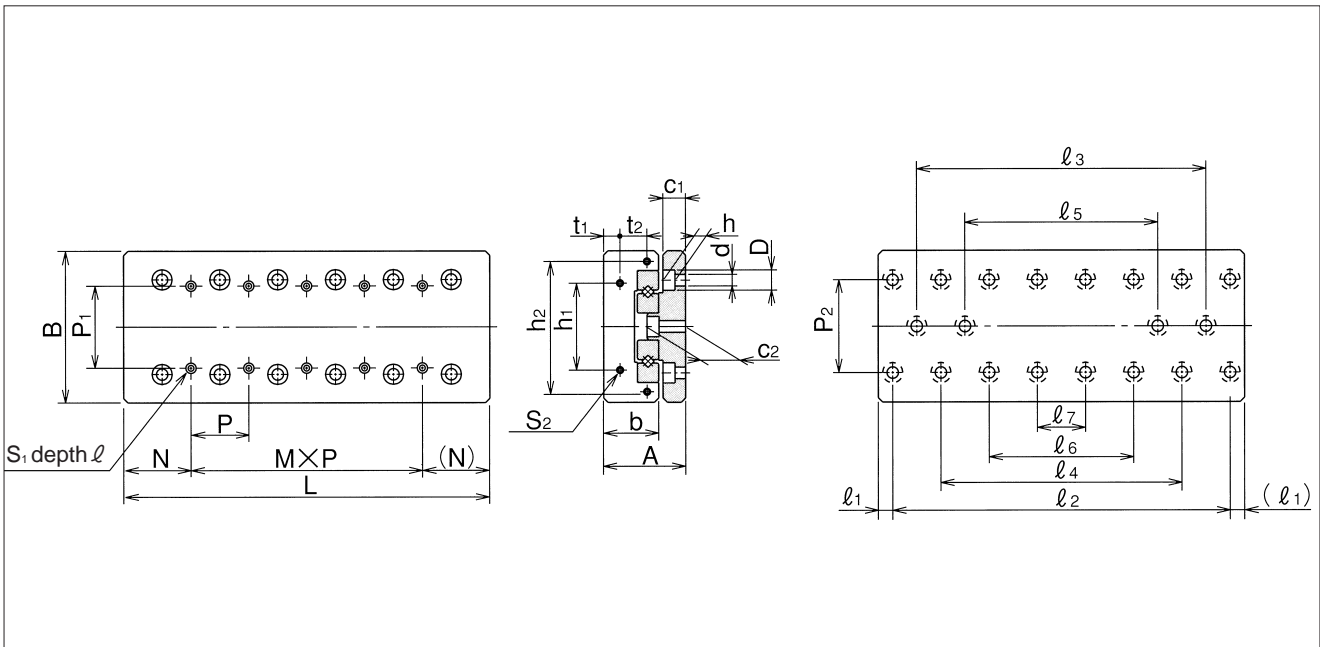


SVT TYPE

– SVT3/SVT4 –

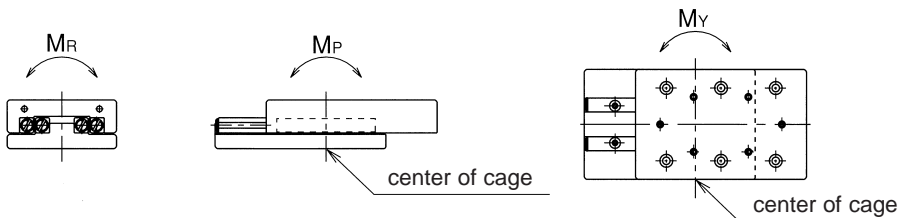


part number		stroke mm	major dimensions				table-top mounting-hole dimensions					table-end mounting-hole dimensions					
standard	anticorrosion		A mm	B mm	L mm	b mm	P ₁ mm	S ₁	ℓ mm	N mm	M×P mm	h ₁ mm	h ₂ mm	t ₁ mm	t ₂ mm	S ₂	P ₂ mm
SVT3055	SVTS3055	30			55						–						
3080	3080	45			80						1×25						
3105	3105	60			105						2×25						
3130	3130	75			130						3×25						
3155	3155	90			155						4×25						
3180	3180	105	28 ^{±0.1}	60 ^{±0.1}	180	18.5	25	M4	8	27.5	5×25	40	–	5.5	–	M3	40
3205	3205	130			205						6×25						
3230	3230	155			230						7×25						
3255	3255	180			255						8×25						
3280	3280	205			280						9×25						
3305	3305	230			305						10×25						
SVT4085	SVTS4085	50			85						–						
4125	4125	75			125						1×40						
4165	4165	105			165						2×40						
4205	4205	130			205						3×40						
4245	4245	155	35 ^{±0.1}	80 ^{±0.1}	245	24	40	M5	10	42.5	4×40	55	–	6.5	–	M3	55
4285	4285	185			285						5×40						
4325	4325	210			325						6×40						
4365	4365	235			365						7×40						
4405	4405	265			405						8×40						



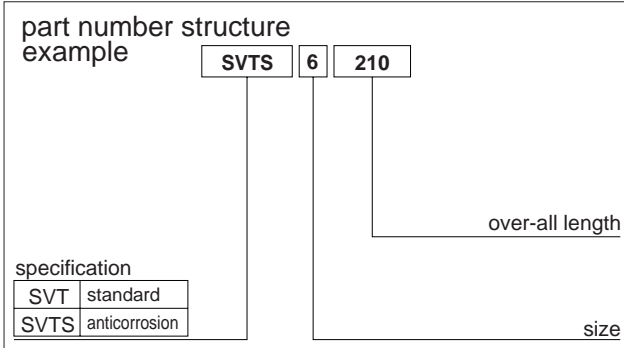
bed-surface mounting-hole dimensions										accuracy※		basic load rating		allowable static moment			mass		size
$d \times D \times h$ mm	c_1 mm	c_2 mm	ℓ_1 mm	ℓ_2 mm	ℓ_3 mm	ℓ_4 mm	ℓ_5 mm	ℓ_6 mm	ℓ_7 mm	T μm	S μm	C N	Co N	M_P N·m	M_Y N·m	M_R N·m	SVT g	SVTS g	
4.5×8×4.5	9	15	10	35	—	—	—	—	—	2	5	1,800	2,120	10.6	12.4	29.7	640	300	3055
				60	—	—	—	—	—	2	5	2,640	3,530	29.2	32.4	49.4	955	440	3080
				85	—	—	—	—	—	3	6	3,030	4,240	57.4	53.5	59.3	1,250	580	3105
				110	—	—	—	—	—	3	6	3,760	5,650	95.1	90.0	79.1	1,570	715	3130
				135	85	—	—	—	—	3	6	4,440	7,060	117	124	98.8	1,850	850	3135
				160	110	—	—	—	—	3	7	5,100	8,470	169	177	119	2,150	990	3180
				185	135	85	—	—	—	3	7	5,410	9,180	199	207	129	2,450	1,130	3205
				210	160	110	—	—	—	3	7	5,720	9,880	264	256	138	2,740	1,270	3230
				235	185	135	—	—	—	3	7	6,320	11,300	301	311	158	3,040	1,410	3255
				260	210	160	110	—	—	3	7	6,620	12,000	340	350	168	3,360	1,540	3280
285	235	185	135	—	—	3	7	6,910	12,700	425	414	178	3,660	1,680	3305				
5.5×10×5.4	10.5	18	10	65	—	—	—	—	—	2	5	3,560	4,350	52.8	47.4	87.0	1,700	780	4085
				105	—	—	—	—	—	3	6	5,220	7,250	121	112	145	2,500	1,140	4125
				145	—	—	—	—	—	3	7	6,720	10,200	165	178	203	3,300	1,510	4165
				185	105	—	—	—	—	3	7	8,120	13,100	273	289	261	4,100	1,870	4205
				225	145	—	—	—	—	3	7	9,430	16,000	409	428	319	4,900	2,240	4245
				265	185	—	—	—	—	3	7	10,700	18,900	571	594	377	5,700	2,600	4285
				305	225	145	—	—	—	4	8	11,900	21,800	760	787	435	6,500	3,000	4325
				345	265	185	—	—	—	4	8	13,100	24,700	977	1,010	493	7,300	3,300	4365
385	305	225	—	—	—	4	8	13,600	26,100	1,220	1,190	522	8,100	3,700	4405				

1N \approx 0.102kgf 1N·m \approx 0.102kgf·m

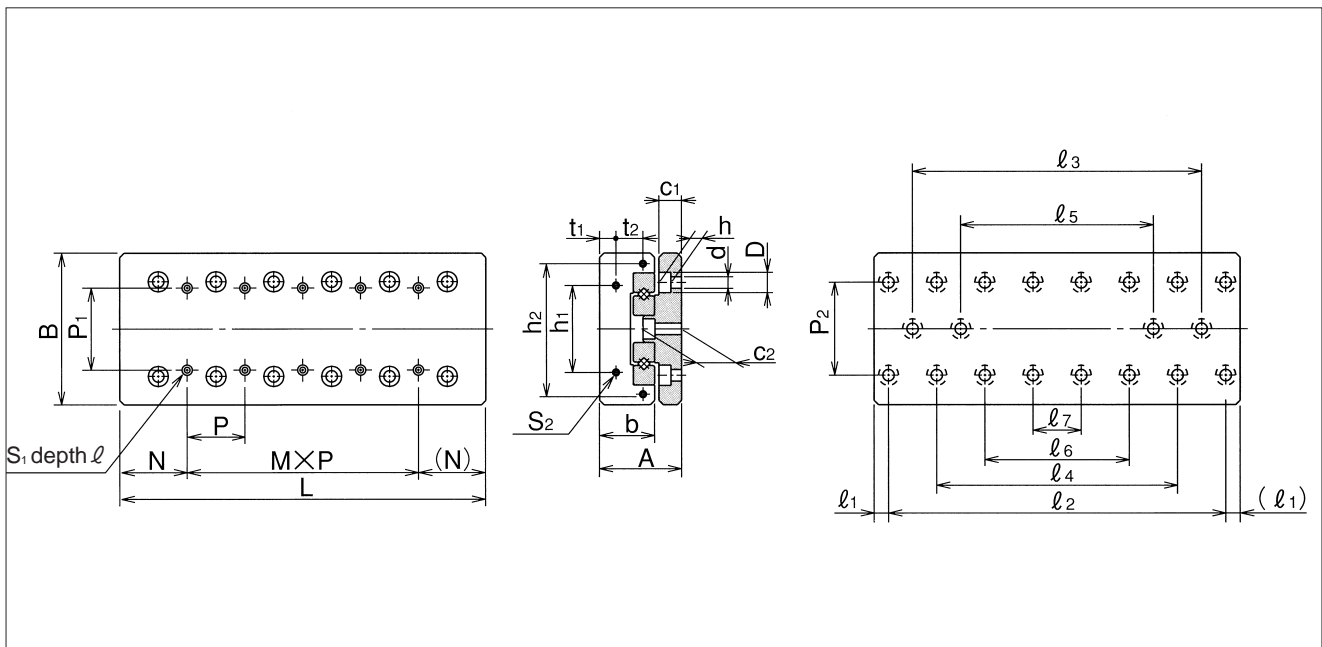


SVT TYPE

— SVT6/SVT9 —

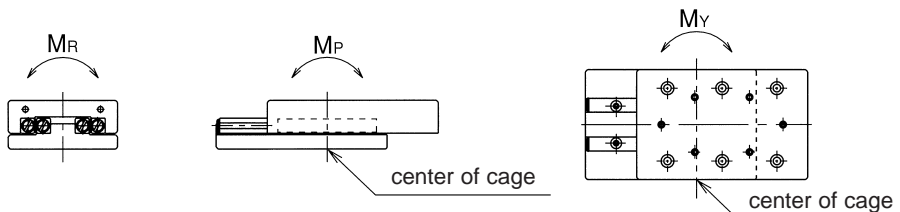


part number		stroke mm	major dimensions				table-top mounting-hole dimensions					table-end mounting-hole dimensions					
standard	anticorrosion		A mm	B mm	L mm	b mm	P ₁ mm	S ₁	ℓ mm	N mm	M×P mm	h ₁ mm	h ₂ mm	t ₁ mm	t ₂ mm	S ₂	P ₂ mm
SVT6110	SVTS6110	60			110					—							
6160	6160	95			160					1×50							
6210	6210	130			210					2×50							
6260	6260	165			260					3×50							
6310	6310	200	45 ^{±0.1}	100 ^{±0.1}	310	31	50	M6	12	55	4×50	60	92	8	15	M4	60
6360	6360	235			360						5×50						
6410	6410	265			410						6×50						
6460	6460	300			460						7×50						
6510	6510	335			510						8×50						
SVT9210	—	130			210					—							
9310	—	180			310					1×100							
9410	—	350			410					2×100							
9510	—	450			510					3×100							
9610	—	550	60 ^{±0.1}	145 ^{±0.2}	610	43	85	M8	16	105	4×100	90	135	11	20	M4	90
9710	—	650			710						5×100						
9810	—	750			810						6×100						
9910	—	850			910						7×100						
91010	—	950			1,010						8×100						



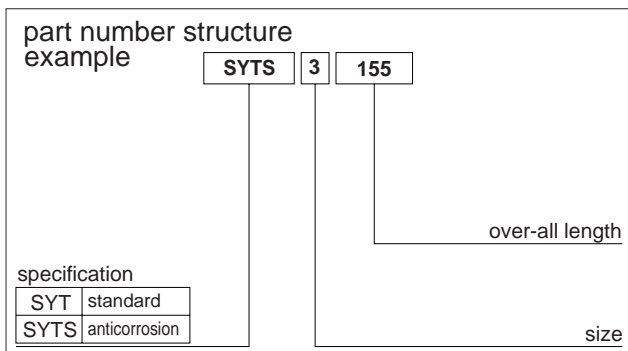
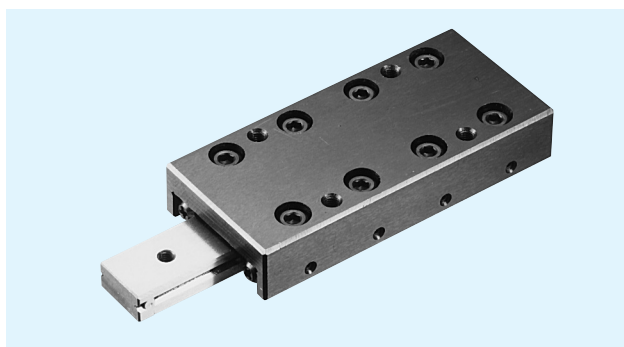
bed-surface mounting-hole dimensions										accuracy※		basic load rating		allowable static moment			mass		size
$d \times D \times h$ mm	c_1 mm	c_2 mm	l_1 mm	l_2 mm	l_3 mm	l_4 mm	l_5 mm	l_6 mm	l_7 mm	T μm	S μm	C N	C_0 N	M_P N·m	M_Y N·m	M_R N·m	SVT g	SVTS g	
7×11.5×7	13	23	10	90	—	—	—	—	—	3	6	8,750	10,900	160	144	244	3,280	1,705	6110
				140	—	—	—	—	—	3	6	12,800	18,100	366	338	407	4,820	2,480	6160
				190	90	—	—	—	—	3	7	16,500	25,300	653	615	570	6,270	3,255	6210
				240	140	—	—	—	—	3	7	20,000	32,600	1,020	974	733	7,740	4,030	6260
				290	190	—	—	—	—	3	7	23,200	39,800	1,470	1,420	896	9,200	4,805	6310
				340	240	140	—	—	—	4	8	26,300	47,100	1,730	1,800	1,060	10,740	5,580	6360
				390	290	190	—	—	—	4	8	29,300	54,300	2,310	2,380	1,220	12,190	6,355	6410
				440	340	240	—	—	—	4	8	32,200	61,500	2,960	3,050	1,380	13,800	7,130	6460
490	390	290	190	—	—	4	8	35,000	68,800	3,700	3,800	1,550	15,300	7,905	6510				
9×14×9	16	29	55	100	—	—	—	—	—	3	7	21,400	29,000	840	760	1,050	12,520	—	9210
				200	—	—	—	—	—	3	7	32,500	50,800	1,650	1,780	1,830	17,950	—	9310
				300	100	—	—	—	—	4	8	32,500	50,800	2,160	2,030	1,830	23,950	—	9410
				400	200	—	—	—	—	4	8	39,300	65,300	3,380	3,220	2,400	30,090	—	9510
				500	300	100	—	—	—	4	9	45,700	79,900	4,090	4,290	2,900	35,990	—	9610
				600	400	200	—	—	—	4	9	51,800	94,400	5,720	5,950	3,400	41,890	—	9710
				700	500	300	100	—	—	5	10	54,700	102,000	7,620	7,370	3,700	47,790	—	9810
				800	600	400	200	—	—	5	10	60,500	116,000	10,000	9,500	4,200	53,690	—	9910
900	700	500	300	100	—	5	10	66,100	131,000	12,000	12,000	4,700	59,590	—	91010				

1N≐0.102kgf 1N·m≐0.102kgf·m

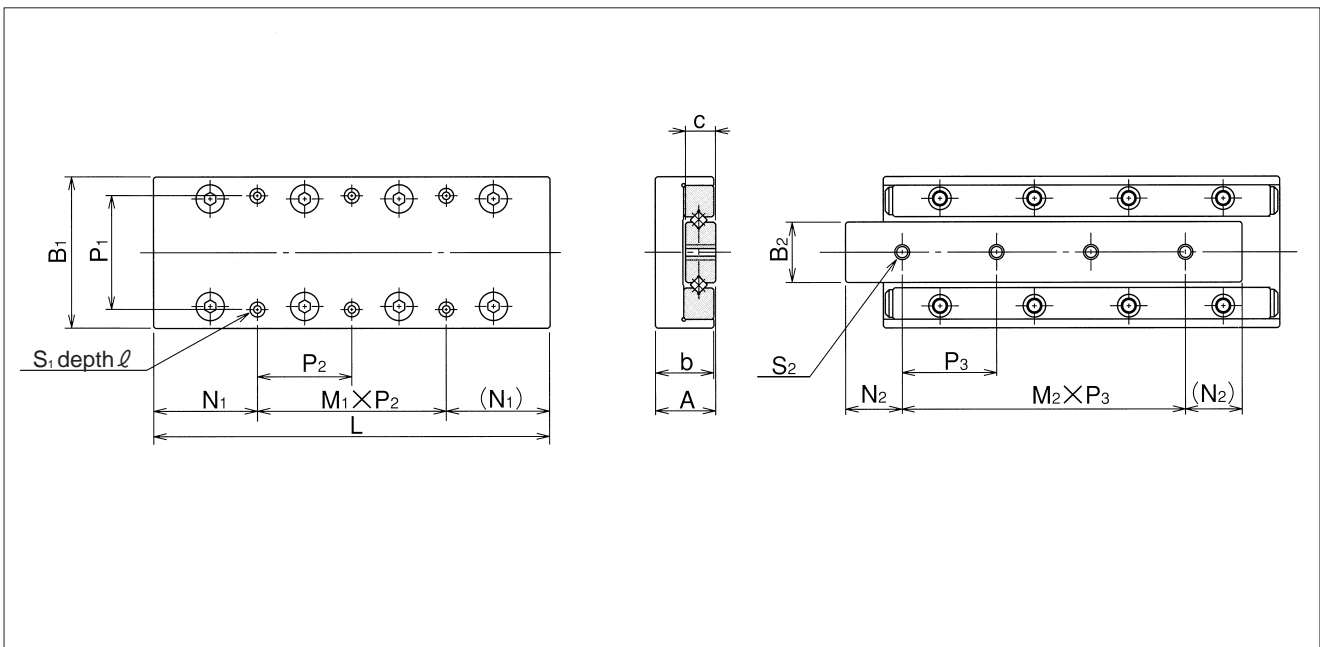


SYT TYPE

– SYT1/SYT2 –

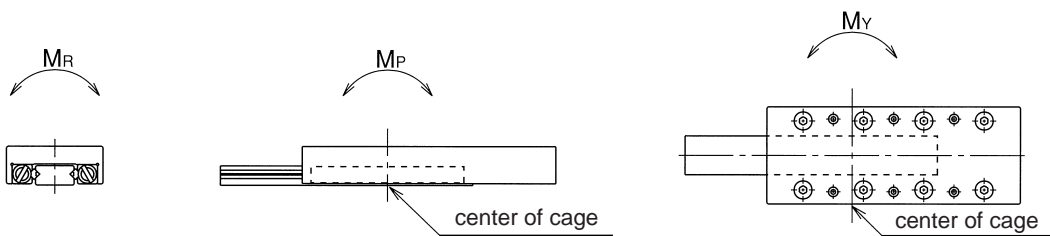


part number		stroke mm	major dimensions						table-top mounting-hole dimensions		
standard	anticorrosion		A mm	B ₁ mm	L mm	b mm	B ₂ mm	c mm	P ₁ mm	S ₁	ℓ mm
SYT1025	SYTS1025	12			25						
1035	1035	18			35						
1045	1045	25			45						
1055	1055	32	8 ^{±0.1}	20 ^{±0.1}	55	7.5	6.6	4	14	M2.6	3.5
1065	1065	40			65						
1075	1075	45			75						
1085	1085	50			85						
SYT2035	SYTS2035	18			35						
2050	2050	30			50						
2065	2065	40			65						
2080	2080	50	12 ^{±0.1}	30 ^{±0.1}	80	11.5	12	6	22	M3	5.5
2095	2095	60			95						
2110	2110	70			110						
2125	2125	80			125						



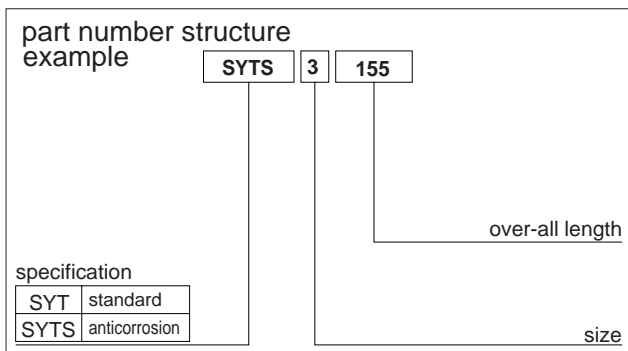
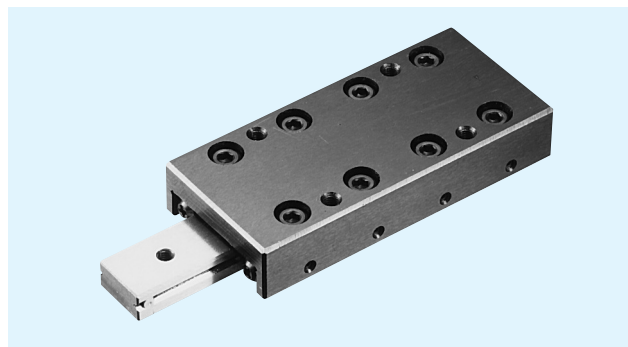
		center rail mounting-hole dimensions			accuracy※		basic load rating		allowable static moment			mass g	size
N ₁ mm	M ₁ × P ₂ mm	S ₂	N ₂ mm	M ₂ × P ₃ mm	T μm	S μm	dynamic	static	M _P N·m	M _Y N·m	M _R N·m		
							C N	Co N					
3.5	1 × 18	M2.6	5	2 × 7.5	2	4	340	312	1.1	1.0	1.1	22	1025
3.5	1 × 28		7.5	2 × 10	2	4	572	624	2.0	2.3	2.3	33	1035
12.5	1 × 20		7.5	3 × 10	2	5	676	780	4.6	4.3	2.9	42	1045
12.5	1 × 30		7.5	4 × 10	2	5	776	936	6.3	5.9	3.5	52	1055
12.5	2 × 20		7.5	5 × 10	2	5	871	1,090	8.3	7.8	4.1	63	1065
22.5	1 × 30		7.5	6 × 10	2	5	1,050	1,400	13.0	12.4	5.3	72	1075
12.5	2 × 30		7.5	7 × 10	2	5	1,140	1,560	15.7	15.0	5.9	83	1085
3.5	1 × 28	M3	7.5	1 × 20	2	4	594	588	3.5	2.9	3.8	79	2035
3.5	1 × 43		10	2 × 15	2	4	805	882	6.1	5.5	5.7	113	2050
17.5	1 × 30		10	3 × 15	2	5	999	1,180	9.7	8.8	7.6	150	2065
17.5	1 × 45		10	4 × 15	2	5	1,350	1,760	14.0	15.3	11.5	185	2080
17.5	2 × 30		10	5 × 15	2	5	1,520	2,060	19.1	20.6	13.4	215	2095
32.5	1 × 45		10	6 × 15	2	5	1,680	2,350	31.7	30.0	15.3	255	2110
17.5	2 × 45		10	7 × 15	2	5	1,840	2,650	39.1	37.2	17.2	295	2125

1N ≅ 0.102kgf 1N·m ≅ 0.102kgf·m

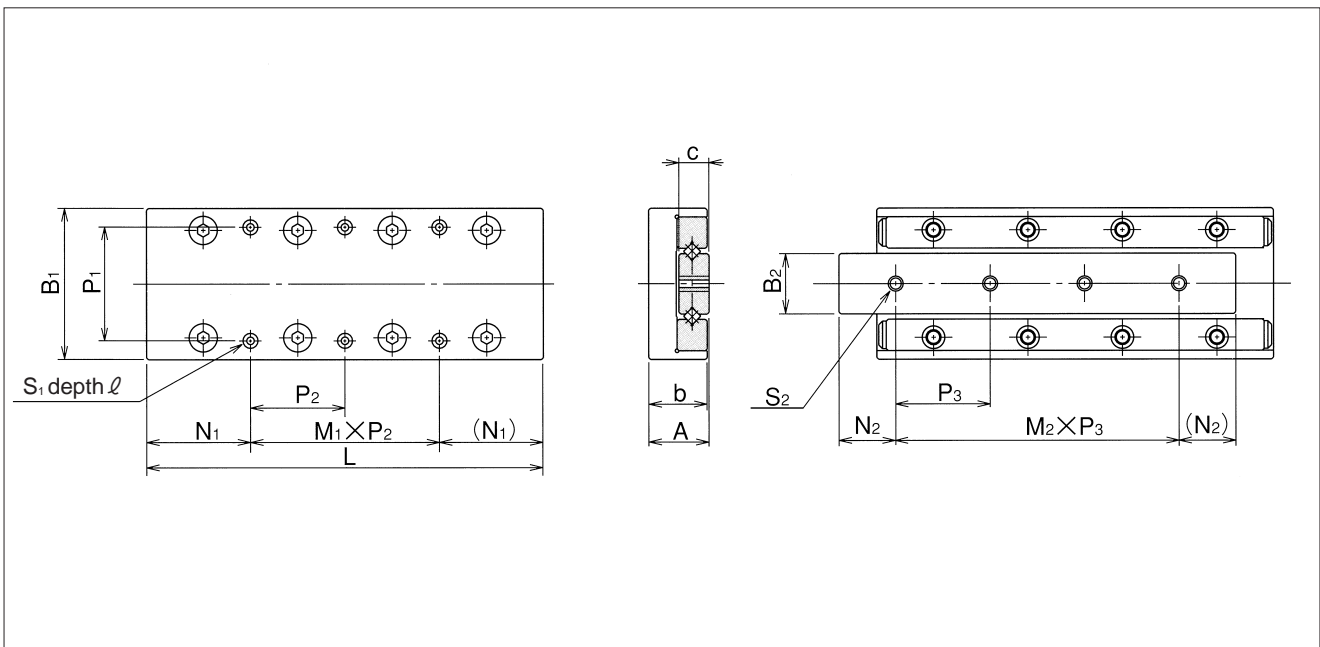


SYT TYPE

– SYT3 –

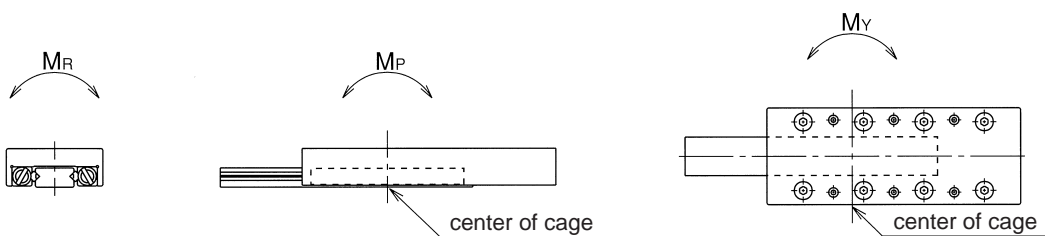


part number		stroke mm	major dimensions						table-top mounting-hole dimensions		
standard	anticorrosion		A mm	B ₁ mm	L mm	b mm	B ₂ mm	c mm	P ₁ mm	S ₁	ℓ mm
SYT3055	SYTS3055	30			55						
3080	3080	45			80						
3105	3105	60			105						
3130	3130	75	16 ^{±0.1}	40 ^{±0.1}	130	15.5	16	8	30	M4	7.5
3155	3155	90			155						
3180	3180	105			180						
3205	3205	130			205						



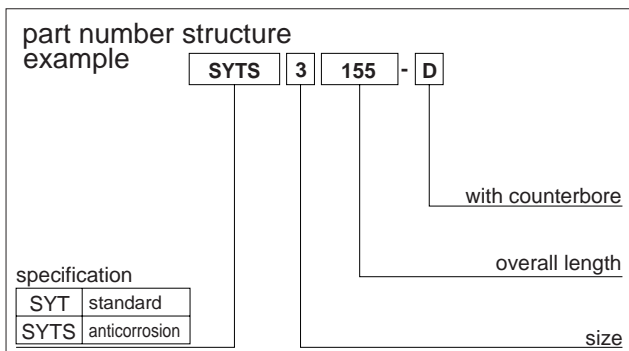
		center rail mounting-hole dimensions			accuracy※		basic load rating		allowable static moment			mass g	size
N ₁ mm	M ₁ × P ₂ mm	S ₂	N ₂ mm	M ₂ × P ₃ mm	T μm	S μm	dynamic	static	M _P N·m	M _Y N·m	M _R N·m		
							C N	Co N					
7.5	1 × 40	M4	10	1 × 35	2	5	1,800	2,120	10.6	12.4	18.4	225	3055
7.5	1 × 65		15	2 × 25	2	5	2,640	3,530	29.2	32.4	30.7	340	3080
27.5	1 × 50		15	3 × 25	3	5	3,030	4,240	57.4	53.5	36.9	440	3105
27.5	1 × 75		15	4 × 25	3	5	3,760	5,650	95.1	90.0	49.1	560	3130
27.5	2 × 50		15	5 × 25	3	5	4,440	7,060	117	124	61.4	655	3155
52.5	1 × 75		15	6 × 25	3	5	5,100	8,470	169	177	73.7	770	3180
27.5	2 × 75		15	7 × 25	3	5	5,410	9,180	199	207	79.8	880	3205

1N ≅ 0.102kgf 1N·m ≅ 0.102kgf·m

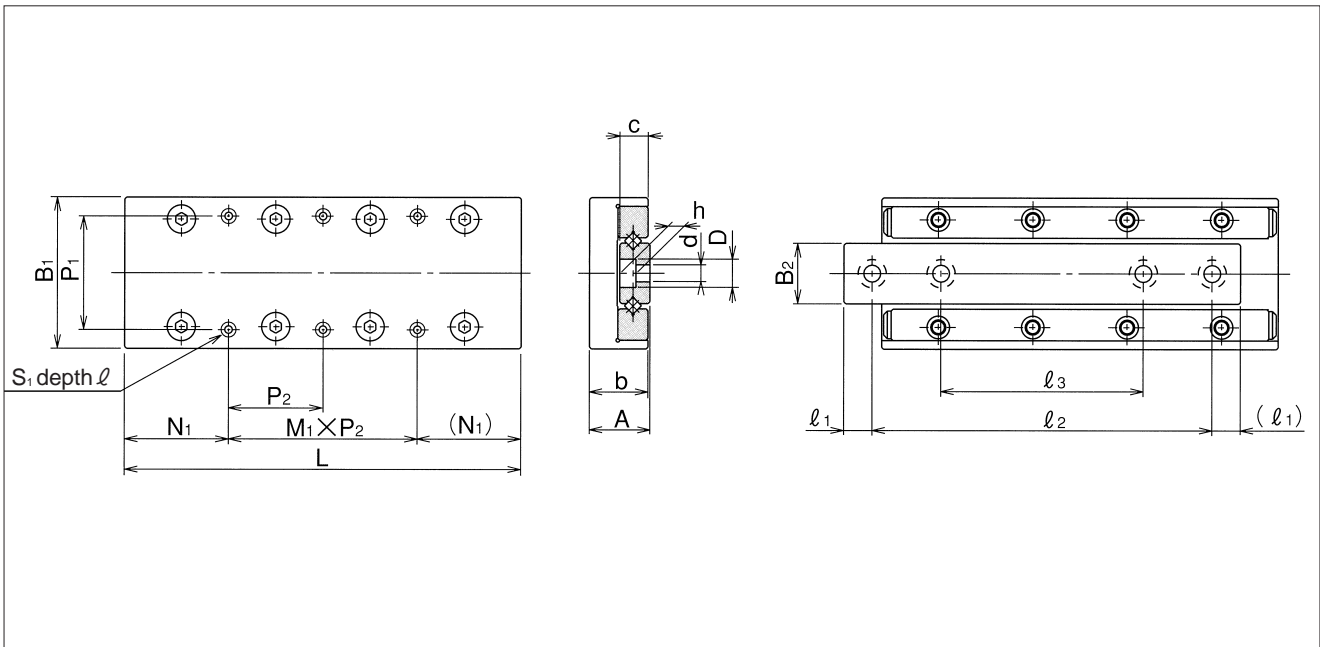


SYT-D TYPE

– SYT1/SYT2 –

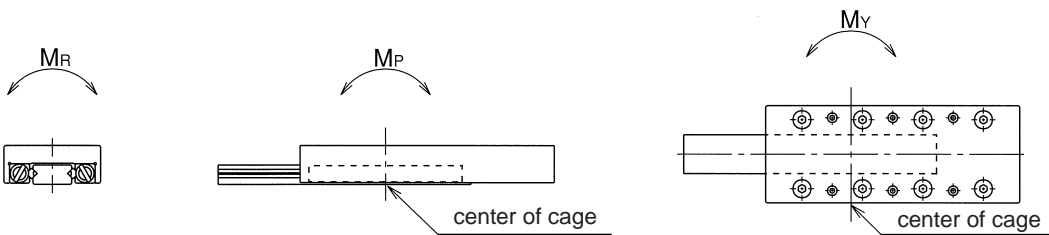


part number		stroke mm	major dimensions						table-top mounting-hole dimensions			
standard	anticorrosion		A mm	B ₁ mm	L mm	b mm	B ₂ mm	c mm	P ₁ mm	S ₁	∅ mm	N ₁ mm
SYT1025-D	SYTS1025-D	12			25							3.5
1035-D	1035-D	18			35							3.5
1045-D	1045-D	25			45							12.5
1055-D	1055-D	32	8 ^{±0.1}	20 ^{±0.1}	55	7.5	6.6	4	14	M2.6	3.5	12.5
1065-D	1065-D	40			65							12.5
1075-D	1075-D	45			75							22.5
1085-D	1085-D	50			85							12.5
SYT2035-D	SYTS2035-D	18			35							3.5
2050-D	2050-D	30			50							3.5
2065-D	2065-D	40			65							17.5
2080-D	2080-D	50	12 ^{±0.1}	30 ^{±0.1}	80	11.5	12.0	6	22	M3	5.5	17.5
2095-D	2095-D	60			95							17.5
2110-D	2110-D	70			110							32.5
2125-D	2125-D	80			125							17.5



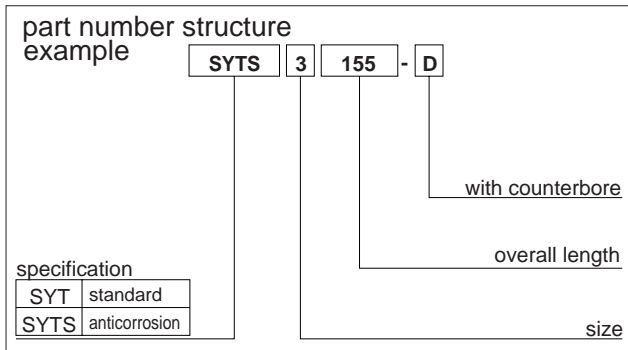
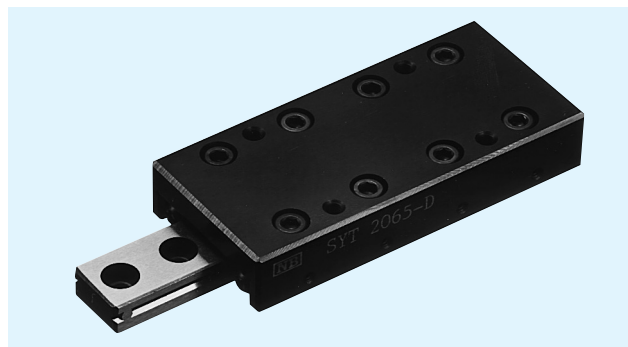
M ₁ × P ₂ mm	center rail mounting-hole dimensions				accuracy※		basic load rating		allowable static moment			mass g	size
	d × D × h mm	l ₁ mm	l ₂ mm	l ₃ mm	T μm	S μm	dynamic	static	M _P N·m	M _Y N·m	M _R N·m		
							C N	Co N					
1 × 18	2.5 × 4.1 × 2.2	3.5	18	—	2	4	340	312	1.1	1.0	1.1	22	1025
1 × 28		5	25	—	2	4	572	624	2.0	2.3	2.3	33	1035
1 × 20		3.5	38	25	2	5	676	780	4.6	4.3	2.9	42	1045
1 × 30		3.5	48	29	2	5	776	936	6.3	5.9	3.5	52	1055
2 × 20		5	55	31	2	5	871	1,090	8.3	7.8	4.1	63	1065
1 × 30		5	65	35	2	5	1,050	1,400	13.0	12.4	5.3	72	1075
2 × 30		5	75	40	2	5	1,140	1,560	15.7	15.0	5.9	83	1085
1 × 28	3.5 × 6 × 3.3	5	25	—	2	4	594	588	3.5	2.9	3.8	79	2035
1 × 43		7.5	35	—	2	4	805	882	6.1	5.5	5.7	113	2050
1 × 30		5	55	33	2	5	999	1,180	9.7	8.8	7.6	150	2065
1 × 45		5	70	40	2	5	1,350	1,760	14.0	15.3	11.5	185	2080
2 × 30		5	85	45	2	5	1,520	2,060	19.1	20.6	13.4	215	2095
1 × 45		7.5	95	50	2	5	1,680	2,350	31.7	30.0	15.3	255	2110
2 × 45		7.5	110	55	2	5	1,840	2,650	39.1	37.2	17.2	295	2125

1N ≅ 0.102kgf 1N·m ≅ 0.102kgf·m

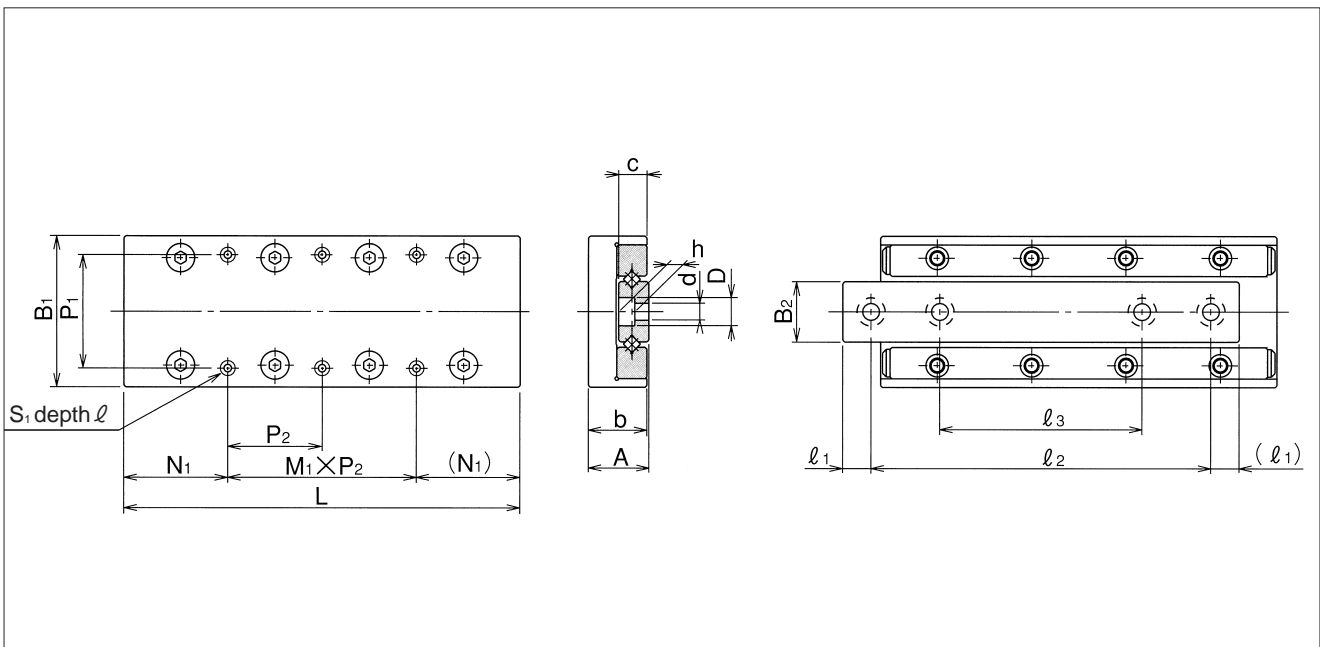


SYT-D TYPE

– SYT3 –

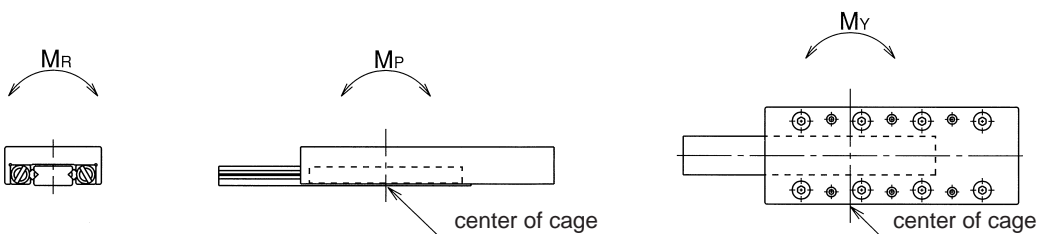


part number		stroke mm	major dimensions						table-top mounting-hole dimensions			
standard	anticorrosion		A mm	B ₁ mm	L mm	b mm	B ₂ mm	c mm	P ₁ mm	S ₁	∅ mm	N ₁ mm
SYT3055-D	SYTS3055-D	30			55							7.5
3080-D	3080-D	45			80							7.5
3105-D	3105-D	60			105							27.5
3130-D	3130-D	75	16 ^{±0.1}	40 ^{±0.1}	130	15.5	16	8	30	M4	7.5	27.5
3155-D	3155-D	90			155							27.5
3180-D	3180-D	105			180							52.5
3205-D	3205-D	130			205							27.5



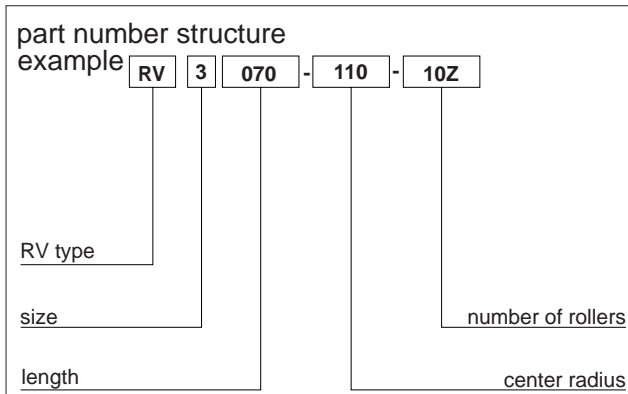
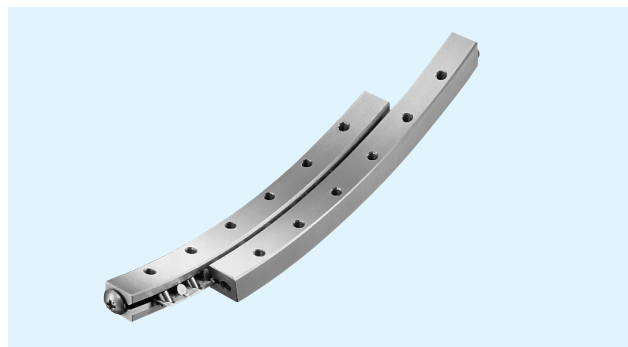
M ₁ × P ₂ mm	center rail mounting-hole dimensions				accuracy※		basic load rating		allowable static moment			mass g	size
	d × D × h mm	l ₁ mm	l ₂ mm	l ₃ mm	T μm	S μm	dynamic	static	M _P N·m	M _Y N·m	M _R N·m		
							C N	Co N					
1 × 40	4.5 × 7.5 × 4.3	7.5	40	—	2	5	1,800	2,120	10.6	12.4	18.4	225	3055
1 × 65		6	68	43	2	5	2,640	3,530	29.2	32.4	30.7	340	3080
1 × 50		7.5	90	55	3	5	3,030	4,240	57.4	53.5	36.9	440	3105
1 × 75		7.5	115	65	3	5	3,760	5,650	95.1	90.0	49.1	560	3130
2 × 50		7.5	140	95	3	5	4,440	7,060	117	124	61.4	655	3155
1 × 75		7.5	165	85	3	5	5,100	8,470	169	177	73.7	770	3180
2 × 75		7.5	190	95	3	5	5,410	9,180	199	207	79.8	880	3205

1N ≅ 0.102kgf 1N·m ≅ 0.102kgf·m

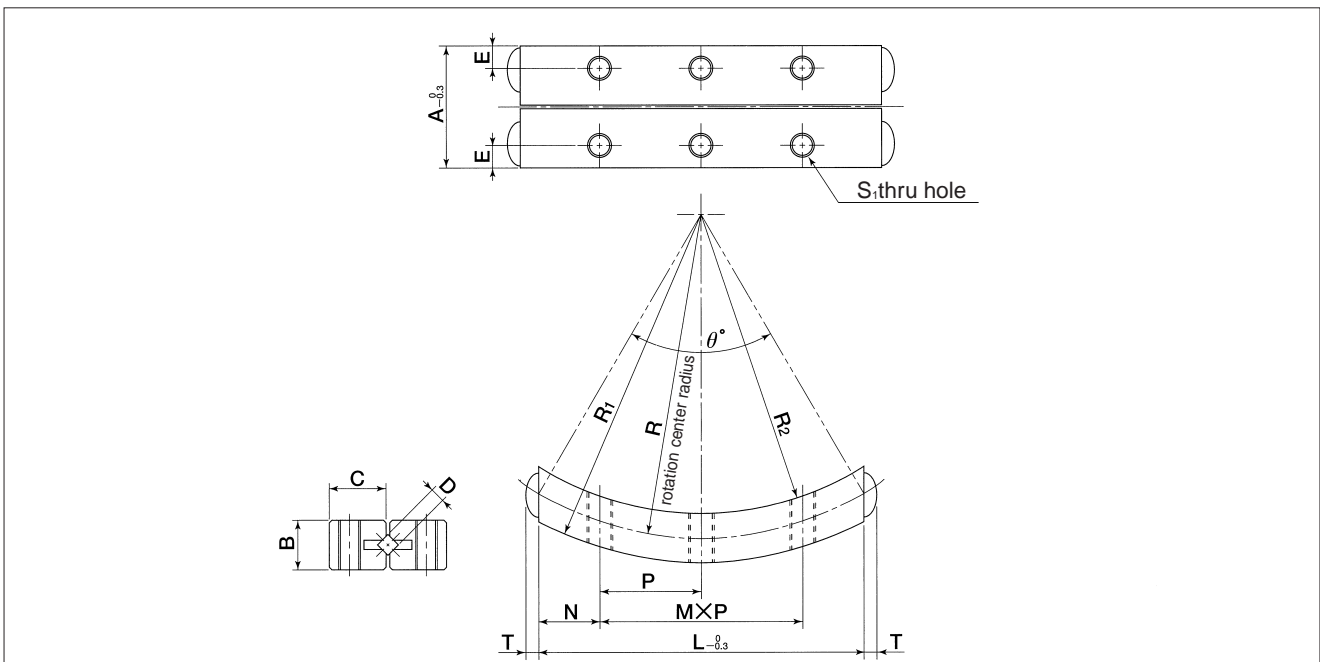


RV TYPE

— Gonio Way —



part number	rotation range	roller diameter D mm	No. of rollers Z	major dimensions						
				L mm	R mm	R ₁ mm	R ₂ mm	A mm	B mm	C mm
RV2040- 50- 7Z	±10°	2	7	40	50	53	47	15	6	7.25
RV2060- 60-12Z			12	60	60	63	57			
RV3070- 90-11Z	±10°	3	11	70	90	94	86	18	8	8.5
RV3070-110-10Z			10	70	110	114	106			
RV3100-160-14Z			14	100	160	164	156			



※ One set consists of 4 curved rails, 2 curved roller cages, and 8 end pieces.

M×P mm	N mm	E mm	S ₁	T mm	θ	basic load rating		mass g	part number
						dynamic C N	static C ₀ N		
2×12.5	7.5	2.5	M3	1.5	47.2°	802	878	49	RV2040- 50 7Z
3×12.5	11.25				60.0°	1,176	1,464	75	RV2060- 60-12Z
3×15	12.5	3	M3	1.9	45.8°	2,632	3,516	137	RV3070- 90-11Z
3×15					37.1°	2,632	3,516	135	RV3070-110-10Z
5×15					36.4°	3,388	4,923	193	RV3100-160-14Z